

JUNE 2021

SAMMAMISH NEWSLETTER

The official publication of the City of Sammamish



Photo Courtesy of Sammamish Resident, Jan Bird

Neighbors and Friends,

As we head into summer, it is very promising to see Sammamish as a leader with over 90% of eligible residents vaccinated as of mid-May. Thank you to the Snoqualmie Tribe Vaccine Partnership for making it easy to get vaccinated locally. The CDC and our State have released new restriction guidance. We are actively evaluating and will announce any changes at www.sammamish.us.

Along with summer comes wildfire season. Living in a beautiful tree canopy community, we want to make sure we are protecting ourselves from potential wildfire dangers. I encourage you to read the fire prevention article on page two and consider the recommendations for protecting your home.

We are very fortunate to live in a beautiful community with natural surroundings and it is our goal to welcome sustainable housing growth. Inside, you'll find an infographic depicting housing that has already been built, currently in the pipeline, and still to be built under the City's 2035 growth target.

At our May 18 Council meeting, we discussed the RFP for a vendor to operate a Sammamish Farmers Market. As of this print, the City has received only one response and it was from the previous vendor who has not provided financial records as requested by the City in accordance with the contract. We will continue to pursue options to bring a Farmers Market back to Sammamish.

I also want to take a moment to thank our local legislators for helping secure the funding for the Louis Thompson Road Tightline Project. The current ditch and culvert system is unable to treat pollution-generating roadway runoff, and cannot control peak flows and associated erosion. This project will remedy these issues and improve our creek and lake water quality.

As always, keep sharing your thoughts and suggestions.
Mayor Karen Moran



IN THIS ISSUE

- 2 Fire Prevention: Defend Your Home from Wildfire
- 3 Helping Students in Sammamish and India
- 4 Tree Removals
- 5 Sammamish Housing Growth Targets
- 6 Kudos to Snoqualmie Tribe Vaccine Partnership
- 6 Big Rock Park Central Opens
- 7 City Hires Deputy City Manager
- 8 City Contact Info



Fire Prevention: Defend Your Home from Wildfire

Contributed by Washington State Department of Natural Resources and FEMA. Learn more about how to prepare your home and property for a wildfire:

www.kingcd.org/programs/better-forests/wildfire-resiliency

Wildfires dramatically alter the terrain and ground conditions of the affected area and can destroy homes, businesses, infrastructure, natural resources, and agriculture. While you can't prevent all wildfires from happening, there are some ways to secure your property to minimize damage and keep your home and your future safe. Here's how you can help protect your home from wildfires.

Construct Roof with Fire-Resistant Materials

The roof is the most at-risk in a wildfire because of its size and orientation. Install and replace eaves with short overhangs and flat ledges. Wildfires might cause embers to fly and latch on to your roof's ledges and eaves, resulting in a fire.

Create 30 Feet of Defensible Space

- Trim vegetation so the fire department can have safe access to your home
- Keep vegetation, including the lawn around the home, low and green
- Beauty bark will smolder -- use it away from the home
- Make sure trees are limbed at least 10 ft. up to reduce the likelihood of a fire getting into the tops of the trees
- Minimum of 5 ft. between branches

Regularly Clean Debris from Roof and Gutters

Keep the gutters, roof and outdoor spaces free of debris like leaves and twigs. Debris can catch fire from wind-blown embers. Regular maintenance reduces the likelihood of something catching on fire on top of your home.

Enclose Home's Foundation

This lowers the chance of wind-blown embers getting underneath your home.

Plan for Access to Water

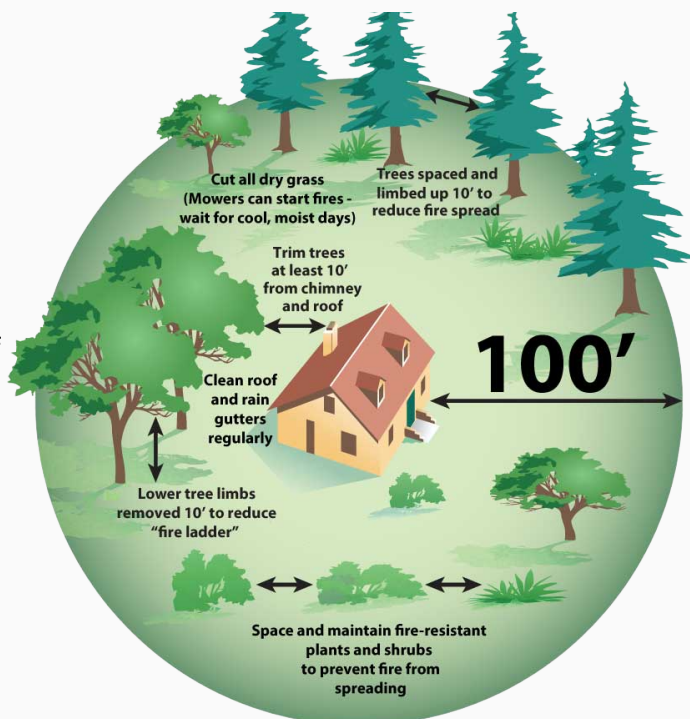
Consider installing external sprinkler systems with dedicated power sources or a water tank, if no water source is available. Connect garden hoses long enough to reach any area of the home and fill garbage cans, tubs, or other large containers with water.

Seal Gaps Around Openings in Exterior Walls and Roofs

Utility connections often go through exterior walls of your home. Seal gaps in exterior walls and roofs with fire-resistant caulk, mortar, or fire-protective expanding foam.

Document Valuables

Consider documenting your contents visually, either by taking photos of high-value items or walking through your home and videotaping your belongings for reference.

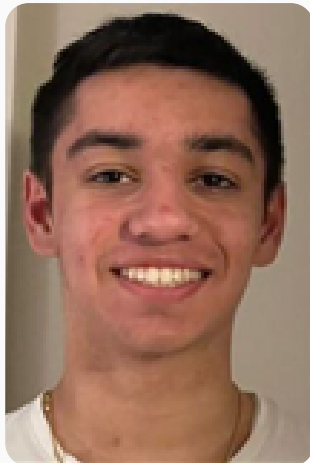


Sammamish Youth Volunteer to Help Students Locally and in India

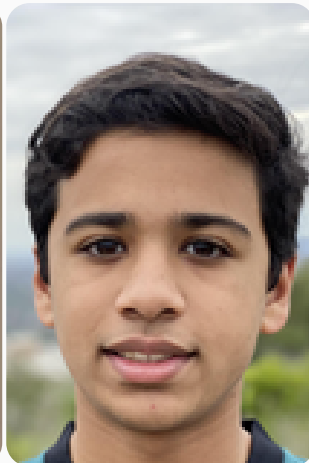
"We have received an overwhelming positive response from the Sammamish community for our tutoring organization, and hope to continue to be able to serve the students of Sammamish, and India into next year!"

Karan, why did you join the Youth Board? How's it going so far?

I initially joined the youth board with aspirations of becoming more involved in the community, and to have the ability to bring about change through my own direct actions, as on the board, we have a powerful voice in the community. The youth board has been an excellent means through which I have been able to meet new people, give back to the community through the various volunteering opportunities we participate in, as well as stay involved in the legislative action that occurs in the community. The board also utilizes direct connections to the important leaders of Washington and Sammamish, and it's been wonderful to be able to hear what they think and ask them questions in the board's interactions with these leaders in events like the Virtual Town Hall that was run this past year. Having a role on the board has been a fantastic experience for me and I'm excited to serve again next year!



Karan Malhotra



Aarav Karam

What are other ways you, Aarav and Karan, are serving the community?

We started our volunteering program within our club, Skyline Indian Culture Club, just this past March. Before its inception, we were both looking for a way to not only benefit the students of Sammamish, but also the students of India. Whenever we go back to visit our home country, in our various native states, the impoverishment that many students face is very evident. For them to not be able to afford something as simple as a pen and paper that we take as a given, shows how privileged we are, as Sammamish residents.

Thus, looking for a way to help the students achieve the equal education they deserve, we decided to partner with an organization called "BigHelp4Education", which provides materials for the underprivileged children of India. In our mission towards equal education, we wanted to begin by extending our services to the students of Sammamish, who have experienced many educational roadblocks over the past year. That is why we decided to offer free tutoring with the help of our volunteer tutors, who cater to our students' specific needs. Although not mandatory, we do appreciate all the donations made (which go directly to Big Help) to support the impoverished students of India. If a donation is made, given the students on both sides are willing, we have a unique Pen Pal system set in place to create interaction between the two students, each on opposite sides of the world. *If you are interested, please visit shsindianclubvolunteering.weebly.com.*

Guidelines for Removing Trees

The City of Sammamish has a goal of enhancing and promoting tree canopy coverage. To address this, the Sammamish Municipal Code requires a permit and replacement tree planting each time a Significant Tree is to be removed within Sammamish city limits.


Tree management is crucial to the environment of the area, helping to mitigate wildfires and encourage good growth. How can you tell if you have a Significant Tree? City code says a deciduous tree is considered significant if its diameter is 12 inches or greater. For a coniferous tree, the diameter must be 8 inches or greater.

Visit www.sammamish.us/trees for information on tree removal processes and directions on how to measure your tree's diameter.

Those applying for a permit for Hazard Tree Removal or Unhealthy Tree Removal within the City of Sammamish must hire a Professional Arborist certified by the International Society of Arboriculture.

Measuring Your Tree

Diameter Breast Height (DBH) is the standard measurement for trees.



Find a Tree's DBH
Wrap a soft measuring tape around the tree's trunk 54in above the ground to find the circumference.

Use the online calculator on the City's website to find the DBH, or calculate it yourself by dividing the circumference by 3.14.

If tree's trunk splits into branches at 54in, measure the circumference and calculate the DBH for each branch. Then use the City's website to find the equivalent DBH.

What Type of Tree Removal Permit Do You Need?

Healthy

- You have a Significant Tree
- Pruning won't address what you want to do
- The tree isn't located in a critical area or a critical area buffer

Unhealthy

- You have an Arborist report stating that the tree is unhealthy and needs to be removed
- The tree can't be partially saved or managed through pruning, cabling or other measures

Hazard

- You have a tree report from a TRAQ-certified Arborist
- The tree has a structural defect that will lead to damage of property, roads, or prevent emergency access

Imminent

- The tree has already been removed because there was an emergency and it was threatening someone's life or property
- You have photographic or video proof that the tree was an imminent threat

Required Tree Replacement



SIGNIFICANT TREE

*Coniferous: 8" or more DBH
Deciduous: 12" or more DBH*

ONE NATIVE TREE

HERITAGE TREE

22" or more DBH

TWO NATIVE TREES

LANDMARK TREE

32" or more DBH

THREE NATIVE TREES

Sammamish Housing Units by the Numbers

This infographic is a visual display of Sammamish's (1) housing unit growth targets, (2) housing already built, (3) housing in the development pipeline, and (4) remaining housing needed to hit Sammamish's regional commitment of new housing units.

CITY OF SAMMAMISH 2035 HOUSING GROWTH TARGETS

4849 HOUSING UNITS
GROWTH TARGET

This is our Housing Unit Target from the years 2006 - 2035.



**HOUSING UNITS
COMPLETED** **3963**

Housing units built include single-family, multi-family homes and ADUs

885 REMAINING HOUSING
UNITS TO BE BUILT

Housing Units to be built to meet the 2035 growth target of 4849.



**HOUSING UNITS WITH
CONCURRENCY CERTIFICATES** **689**

392 of the 689 Units are located within the Town Center and include 55 affordable housing units. Having a concurrency certificate means one can apply for a development permit.

196 HOUSING UNITS
REMAINING TO BE
ENTITLED & DEVELOPED

The City is well on track to meet and exceed its Housing Units Target by the year 2035.



Kudos to the Snoqualmie Tribe Vaccine Partnership

If you want to share a message of appreciation, we invite you to use the Kudoboard we have established to gather notes from residents: www.kudoboard.com/boards/rzGL5rxV

Many residents have reached out to ask how they can show their appreciation for the Snoqualmie Tribe Vaccine Partnership. We are very grateful for the Snoqualmie Tribe's generosity in providing the much-needed COVID-19 vaccines administered by Eastside Fire & Rescue at Lake Sammamish State Park vaccination site. We are also very grateful for the numerous volunteers and staff working at the site. In addition to sharing a message of appreciation, here's information on how to support the Snoqualmie Tribe:

www.snoqualmievaccine.snoqualmietribeweb.us/10-things



Big Rock Park Central's Ribbon Cutting and Opening is in June

Big Rock Park Central is the second parcel of land gifted to the City by Mary Pigott. It is adjacent to Big Rock Park North's 15 acres which opened in 2016. The addition of Big Rock Park Central adds another 20 acres of land covered with dense forest, open meadows, and a stream in the north. The park is enhanced by 1.5 miles of meandering trails navigating through the property and connecting to Big Rock Park North. The two parks now boast 3 miles of trails to explore! Big Rock Park Central also hosts several unique features such as the historic Reard House, the Heritage Garden and The Treehouse.

Stay tuned for the Ribbon Cutting and Acknowledgments video and opening day announcement posting at www.sammamish.us.

Connect Sammamish Homepage Design Submissions

The City of Sammamish invited residents to share their talent by submitting a new banner to be featured on the Connect Sammamish Homepage. The City received amazing submissions and is pleased to share that all submissions will be used on the Homepage – each for two months out of the year so please stay tuned to see Sammamish's amazing talent. View all submissions at connect.sammamish.us/homepage-banner-contest



City of Sammamish Hires Deputy City Manager

The City of Sammamish is pleased to announce the hiring of Scott MacColl as Deputy City Manager.

Scott MacColl has worked in the public sector for over 20 years, primarily focused on issues at the municipal level. Most recently he set up a local government relations practice, working on behalf of cities on local and federal issues. Prior, he worked for a decade at the City of Shoreline as their government relations manager. Before Shoreline, MacColl worked for the Seattle City Council on their professional policy staff. MacColl has also spent time in Olympia working in the legislature on its non-partisan professional policy committee.



“We were very impressed with Scott’s background in legislation and government relations and believe his experience will have a positive impact on our City,” said City Manager Dave Rudat.

Born and bred in the Pacific Northwest, MacColl holds a Masters in Public Administration and Bachelor of Arts from the University of Washington and is a proud Husky. MacColl started on May 17, 2021.

.....
“I’ve committed my career to public service and am excited to continuing this work with Sammamish’s dedicated team of public servants,” said MacColl.


Residents Are Using MySammamish App


In **2020**, a year with limited resources and the logistical challenges of COVID, the City’s Public Works team continued to provide exceptional service to Sammamish, responding to and closing **1,170 requests**.

In **2021**, we are on track to beat our 2020 numbers in request and close rates.

The **MySammamish** app is the fastest, easiest way to submit non-emergency requests! Please download to your smartphone or submit a request at www.sammamish.us/how-do-i/my-sammamish

January - May 2021






 **571** Requests Created

 **483** Requests Closed

Average Acknowledgement Time:
0.5 days

Average Time to Close a Request:
4.4 days

Top 5 Categories of Requests

-  **73 REQUESTS**
Tree / Vegetation in the right of way
-  **71 REQUESTS**
Road Issues
-  **42 REQUESTS**
Drainage / Flooding
-  **35 REQUESTS**
Traffic Sign Repairs
-  **33 REQUESTS**
Potholes

2021 SAMMAMISH CITY COUNCIL



Karen Moran
Mayor
kmoran@sammamish.us



Christie Malchow
Deputy Mayor
cmalchow@sammamish.us



Tom Odell
Councilmember
todell@sammamish.us



Kent Treen
Councilmember
ktreen@sammamish.us



Chris Ross
Councilmember
cross@sammamish.us



Ken Gamblin
Councilmember
kgamblin@sammamish.us



Pam Stuart
Councilmember
pstuart@sammamish.us

You can email the entire City Council at citycouncil@sammamish.us

City of Sammamish Offices

801 228TH AVE SE, SAMMAMISH, WA 98075 · 425-295-0500 · WWW.SAMMAMISH.US

City Staff

Dave Rudat
City Manager

Scott MacColl
Deputy City Manager

Lita Hachey
City Clerk

Dan Pingrey
Sammamish Police Chief

Jeff Clark
EF&R Fire Chief

Aaron Antin
Finance Director

Jim Hominiuk
IT Director

Jeff Elekes
Public Works Director

David Pyle
Community Development
Director

Anjali Myer
Parks, Recreation and Facilities
Director

City Resources

Police Non-Emergency
(206) 296-3311

Eastside Fire & Rescue
(425) 313-3200

King County Sheriff
(206) 263-9133

WA State COVID Call Center
1 (800) 525-0127

King County Animal Control
(206) 296-7387

Garbage - Republic Services
(425) 646-2400

Sammamish Permit Center
(425) 295-0531

**Sammamish Plateau Water
and Sewer**
(425) 392-6256

**NE Sammamish Water and
Sewer**
(425) 868-1144

City Notices

Have an issue or concern?
Use the *My Sammamish* app
on your smartphone.

Have an emergency?
Dial 911

Receive Email and Text Alerts
To subscribe to the City of
Sammamish email and text
alerts and updates go to
www.sammamish.us and
select *Join Our Mailing List*.

**Newsletter suggestions or
concerns?**
Contact the Front Desk at
(425) 295-0500

This newsletter is produced
and printed locally on
recyclable paper.
All rights reserved.

Notice of Public Hearing

City Council Regular Meeting on June 15, 2021 at 6:30 p.m.
Regarding Emergency Moratorium Ordinance