

CALL 48 HOURS BEFORE YOU DIG
1-800-424-5555

NO.	DATE	BY	APPR	REVISION

JOB#: C05A0022
DSGN: NKW
DRN: OXA
CHKD: MLF
DATE: 5/22/2018
SCALE: AS NOTED

DAVID EVANS AND ASSOCIATES INC.
14432 SE Eastgate Way, Suite 400
Bellevue Washington 98007
Phone: 425.519.6500



CITY OF SAMMAMISH
LOUIS THOMPSON ROAD SE SLIDE REPAIR AND DRAINAGE IMPROVEMENTS
KING COUNTY WASHINGTON

2 OF 16
LG1

ABBREVIATIONS

ACP	ASPHALT CONCRETE PAVEMENT
ASP	ASPHALT
ATB	ASPHALT TREATED BASE
BOW	BOTTOM OF WALL
CB	CATCH BASIN
CC	CONCRETE CURB
GDF	CONTROLLED DENSITY FILL
CI	CAST IRON
CONC	CONCRETE
CONST	CONSTRUCTION
CPFP	CORRUGATED POLYETHYLENE PIPE
CPG	COUPLING
CSBC	CRUSHED SURFACING BASE COURSE
CSTC	CRUSHED SURFACING TOP COURSE
CWA	CASCADE WATER ALLIANCE
DI	DUCTILE IRON PIPE
DIA	DIAMETER
DW	DRIVEWAY
DWG	DRAWING
E	EAST
ECC	EXTRUDED CONCRETE CURB
ELEV	ELEVATION
FH	FIRE HYDRANT
FL	FLOWLINE / FLANGE
GRV	GAS VALVE / GATE VALVE
HMA	HOT MIX ASPHALT
IE	INVERT ELEVATION
LF	LINEAR FEET
LT	LEFT
MH	MANHOLE
MJ	MECHANICAL JOINT
MVO	MAIN VALVE OPENING
NST	NOT STEEPER THAN
PC	POINT OF CURVE
PCC	POINT OF COMPOUND CURVE
PG	PERFORMANCE GRADE
PP	POWER POLE
PRC	POINT OF REVERSE CURVE
PT	POINT OF TANGENT
PVC	POINT OF VERTICAL CURVE/POLYETHYLENE
R	RADIUS
RCP	REINFORCED CONCRETE PIPE
RDCR	REDUCER
ROW	RIGHT-OF-WAY
RU	RESTRAINED JOINT
RT	RIGHT
S	SOUTH
SD	STORM DRAIN
SPWS	SAMMAMISH PUBLIC WORKS STANDARD
SS	SANITARY SEWER
STA	STATION
STD	STANDARD
TBOP	TOP BACK OF PATH
TOC	TOP OF CURB
TOW	TOP OF WALL
TRANS	TRANSITION
UNKN	UNKNOWN
UP	UTILITY POLE
USPS	UNITED STATES POSTAL SERVICE
W	WEST
WM	WATER METER
WV	WATER VALVE

EXISTING LEGEND

●	REBAR (FOUND AS NOTED)
⊙	MONUMENT (FOUND AS NOTED)
⊕	SIGN
○	POST OR BOLLARD
■	MALIBOX
⊗	PILE
⊙	DECIDUOUS TREE
⊙	CONIFEROUS TREE
⊙	BUSH
⊗	WATER VALVE
⊗	WATER METER
⊗	FIRE HYDRANT
⊗	POST INDICATOR VALVE
⊗	SEWER MANHOLE
⊗	STORM DRAIN MANHOLE
⊗	STORM CATCH BASIN
⊗	STORM CULVERT
○	ELECTRIC POLE
⊗	ELECTRIC POLE/STREET LIGHT
→	GUY ANCHOR
⊗	TELEPHONE RISER
⊗	TELEPHONE CABINET
⊗	POTHOLE LOCATION
---	DITCH LINE
---	EDGE OF GRAVEL OR DIRT
---	RADIUS
---	REINFORCED CONCRETE PIPE
---	REDUCER
---	RIGHT-OF-WAY
---	RESTRAINED JOINT
---	RIGHT
---	SOUTH
---	STORM DRAIN
---	SAMMAMISH PUBLIC WORKS STANDARD
---	SANITARY SEWER
---	STATION
---	STANDARD
---	TOP BACK OF PATH
---	TOP OF CURB
---	TOP OF WALL
---	TRANSITION
---	UNKNOWN
---	UTILITY POLE
---	UNITED STATES POSTAL SERVICE
---	WEST
---	WATER METER
---	WATER VALVE
---	CABLE TV UNDER GROUND LINE
---	WATER LINE
---	SANITARY SEWER LINE
---	STORM DRAIN LINE
---	STORM DRAIN RECORD LINE

SURVEY NOTES

1. PURPOSE OF THIS SURVEY: THIS SURVEY WAS PERFORMED DURING JUNE AND NOVEMBER, 2017 IN SUPPORT OF A HILL SLIDE REPAIR PROJECT AND IS INTENDED TO BE USED FOR THIS PURPOSE. SPECIFIC INFORMATION SHOWN HEREON SHOULD BE VERIFIED AS TO ITS ACCURACY IF THIS SURVEY IS TO BE USED FOR PURPOSES OTHER THAN THAT WHICH IT WAS INTENDED FOR.

2. BASIS OF BEARING: WASHINGTON COORDINATE SYSTEM, NORTH ZONE, NAD83-2011

3. VERTICAL DATUM: NAVD 88

4. METHODOLOGY: FIELD MEASUREMENTS FOR THIS SURVEY WERE PERFORMED USING A LEICA TS15 TOTAL STATION AND A LEICA GS14 GPS RECEIVER. THIS SURVEY COMPLETES WITH THE MINIMUM REQUIRED "ERROR OF CLOSURE" OF 1:10,000 FOR WASHINGTON STATE PLANE COORDINATES AS SET FORTH PER W.A.C. 332-130-090 (AND POSITIONAL TOLERANCE LEVELS OF LESS THAN 0.011 METERS).

5. PROPERTY LINES: THIS IS NOT A BOUNDARY SURVEY. PROPERTY LINES SHOWN HEREON ARE BASED UPON READILY AVAILABLE PLATS/SURVEYS/KING COUNTY ASSESSOR INFORMATION AND ARE SHOWN FOR GRAPHIC PURPOSES ONLY.

6. MONUMENTATION: VISITATION: ALL SURVEY MONUMENTS AND OTHER SURVEY MARKERS SHOWN HEREON WERE VISITED DURING JUNE, 2017 UNLESS OTHERWISE INDICATED.

7. ENCUMBRANCES: THIS SURVEY WAS PERFORMED WITHOUT THE BENEFIT OF A TITLE REPORT. ACCORDINGLY, ANY EASEMENTS OR RESTRICTIONS OF RECORD WHICH MAY BE REVEALED IN A TITLE REPORT HAVE NOT BEEN INCLUDED HEREON.

8. UNDERGROUND UTILITIES: SHOWN REPRESENT FIELD SURVEYED PAINT MARKS AS PLACED ON THE GROUND BY A UTILITY LOCATE SERVICE. NO GUARANTEE IS MADE THAT THE UNDERGROUND UTILITIES SHOWN COMPRISE ALL SUCH UTILITIES IN THE AREA, EITHER IN SERVICE OR ABANDONED OR THAT THE UNDERGROUND UTILITIES ARE SHOWN IN THEIR EXACT LOCATION. THE UTILITIES ARE SHOWN AS ACCURATELY AS POSSIBLE FROM AVAILABLE INFORMATION.

9. CONTIGUOUS INTERVAL: 1 FOOT IN PAVED AREAS AND 2 FEET IN UNPAVED HILLSIDE

10. SUBSURFACE CONDITIONS: WERE NOT EXAMINED OR CONSIDERED AS PART OF THIS SURVEY.

11. 1-800-424-5555: MUST BE CALLED NOT LESS THAN 48 HOURS BEFORE BEGINNING EXCAVATION WHERE ANY UNDERGROUND UTILITIES MAY BE LOCATED. FAILURE TO DO SO COULD MEAN BEARING SUBSTANTIAL REPAIR COSTS. (UP TO THREE TIMES THE COST OF REPAIRS TO THE SERVICE).

GENERAL NOTES

1. THE PROPOSED LEGEND IS SHOWN THROUGHOUT THE PLANS.

PHONE NUMBERS

911	FIRE / MEDIC 1 / POLICE
(425) 295-0500	SAMMAMISH PUBLIC WORKS
(425) 392-6256	WATER (SAMMAMISH PLATEAU WATER & SEWER DISTRICT)
(425) 392-6256	SEWER (SAMMAMISH PLATEAU WATER & SEWER DISTRICT)
(425) 417-9188	POWER (PUGET SOUND ENERGY)
(425) 417-9188	GAS (PUGET SOUND ENERGY)
(425) 263-5348	COMMUNICATIONS (COMCAST)
(206) 261-1402	COMMUNICATIONS (CENTURY LINK)
(425) 837-8795	U.S. POST OFFICE, ISSAQUAH POSTMASTER

CALL 48 HOURS BEFORE YOU DIG
1-800-424-5555

NO.	DATE	BY	REVISION
1	09/20/18	NKW	STORM DRAIN CROSSING NEAR 210TH PLACE SE REVISION
2	10/20/18	NKW	STORM DRAIN CROSSING NEAR 211TH PLACE SE REVISION
3	11/20/18	NKW	PAVEMENT AT 210TH PLACE SE REVISION

JOB#: C03A0022
 DRN: NKW
 OXA: NKW
 DATE: 11/12/2018
 SCALE: AS NOTED

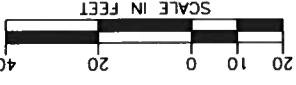
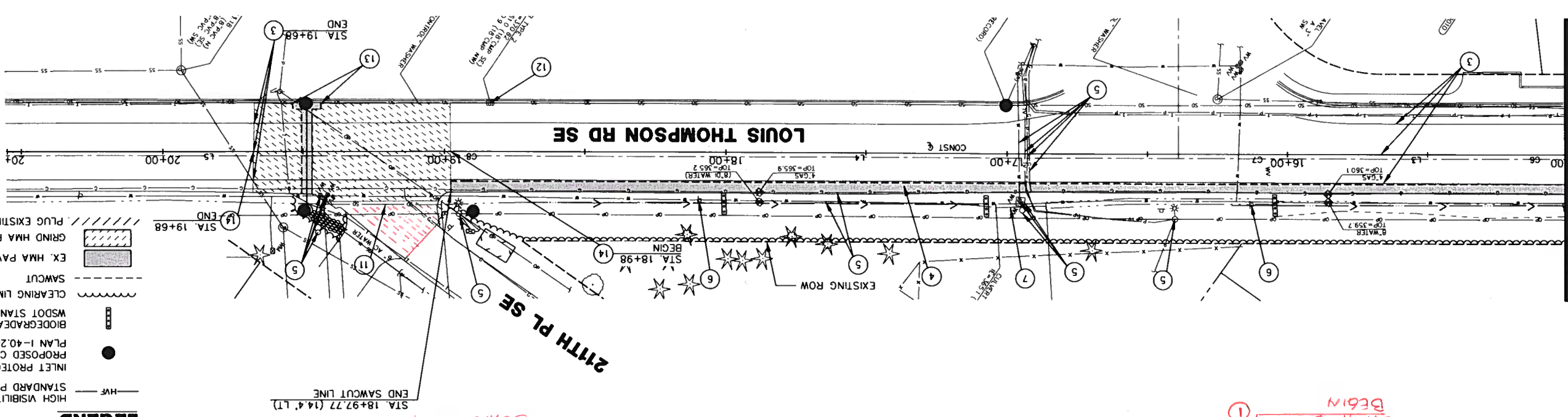
DAVID EVANS AND ASSOCIATES INC.
 14432 SE Eastgate Way, Suite 400
 Bellevue Washington 98007
 Phone: 425.519.6500



CITY OF SAMMAMISH
LOUIS THOMPSON ROAD SE SLIDE REPAIR AND DRAINAGE IMPROVEMENTS
 KING COUNTY WASHINGTON

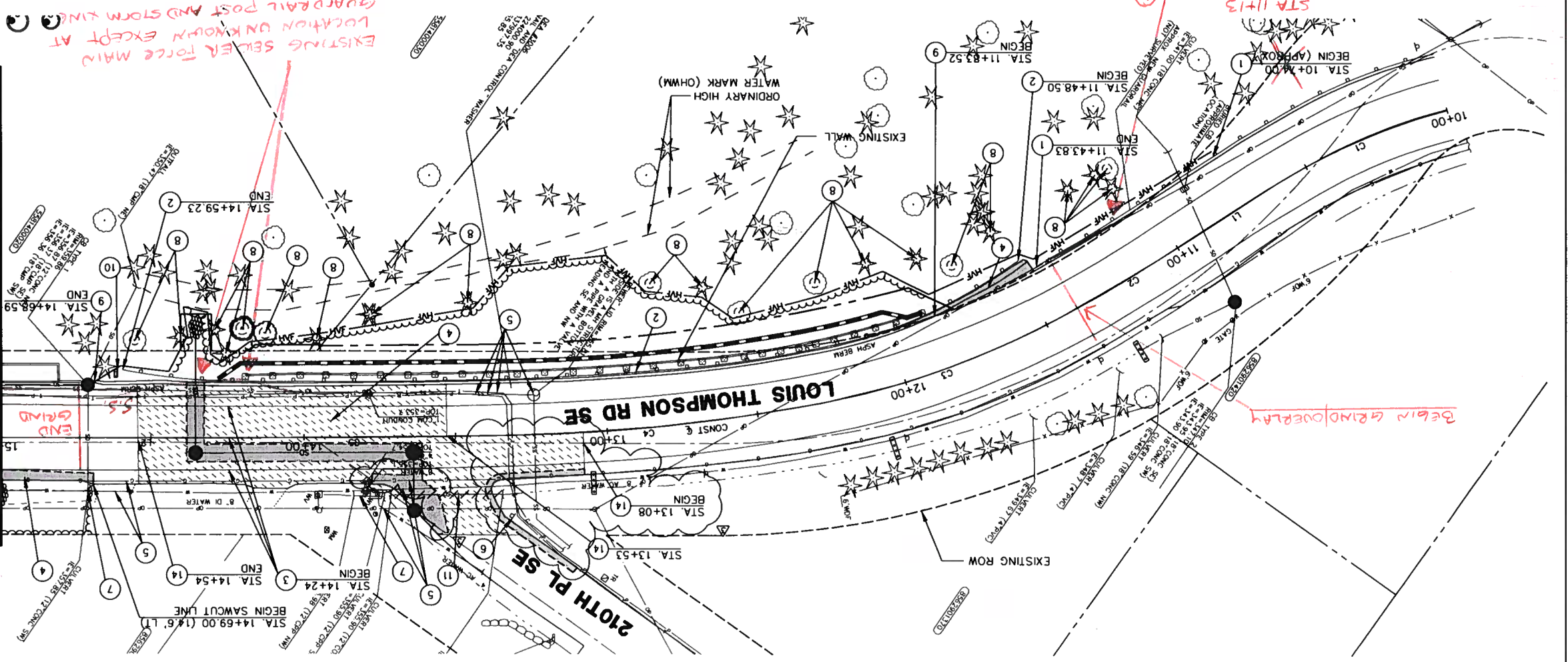
EC01
 5 OF 16

**MATCHLINE STA. 15+00,
SEE ABOVE RIGHT**



- LEGEND**
- HWY — HIGH VISIBILITY SILT FENCE PER WSDOT STANDARD PLAN I-30.17-00
 - INLET PROTECTION (EXISTING AND PROPOSED CB'S) PER WSDOT STANDARD PLAN I-40.20-00
 - ▬ BIODEGRADABLE CHECK DAM PER WSDOT STANDARD PLAN I-50.20-01
 - ~ CLEARING LIMITS
 - SAWCUT
 - ▨ EX. HMA PAVEMENT REMOVAL
 - ▩ GRIND HMA PAVEMENT
 - ▧ PLUG EXISTING PIPE

MATCHLINE STA. 15+00, SEE BELOW LEFT



SEC. 32, T. 25 N, R. 6 E, W.M.

- CONSTRUCTION NOTES**
- 1 REMOVE AND RESET EXISTING GUARDRAIL. PROTECT REMOVED TERMINAL END TO BE RELOCATED TO END OF NEW GUARDRAIL LIMITS. LIMITS OF REMOVAL ARE APPROXIMATE. CONTRACTOR TO FIELD VERIFY EXISTING GUARDRAIL REMOVAL LIMITS TO TRANSITION TO NEW GUARDRAIL ALIGNMENT.
 - 2 REMOVE EXISTING GUARDRAIL.
 - 3 REMOVE PAINT LINE.
 - 4 REMOVE EXISTING ASPHALT CONCRETE PAVEMENT.
 - 5 PROTECT EXISTING UTILITIES TO REMAIN.
 - 6 REMOVE AND REPLACE EXISTING SIGN.
 - 7 PROTECT EXISTING STORMDRAIN PIPE.
 - 8 PROTECT EXISTING TREE TO REMAIN.
 - 9 REMOVE EXISTING ASPHALT BERM.
 - 10 PROTECT EXISTING MAILBOX.
 - 11 PLUG EXISTING PIPE.
 - 12 PROTECT EXISTING STRUCTURE.
 - 13 REMOVE EXISTING CURB AND GUTTER AT NEAREST JOINT.
 - 14 GRIND 2-INCH OF EXISTING PAVEMENT. PAVEMENT LIMITS PER SPWS 2-05B.

GENERAL NOTES

- 1 TREES LOCATED NEAR THE CLEARING AND GRUBBING LIMITS SHALL BE PROTECTED WITH HIGH VISIBILITY FENCE AS DIRECTED BY THE ENGINEER.
- 2 THE CONTRACTOR SHALL VERIFY UTILITIES PRIOR TO CONSTRUCTION ACTIVITIES.
- 3 CONTRACTOR SHALL TAKE ALL NECESSARY PRECAUTIONS WHEN PERFORMING WORK BELOW OVERHEAD POWER LINES.
- 4 SEE ROADWAY AND DRAINAGE PLAN FOR CONSTRUCTION CENTERLINE ALIGNMENT INFORMATION.
- 5 REFER TO WALL PLAN, AND ROADWAY AND DRAINAGE PLAN FOR ADDITIONAL REMOVAL LIMITS.

CALL 48 HOURS BEFORE YOU DIG
1-800-424-5555

NO.	DATE	BY	APPR.	REVISION
1	09/20/18	NKW	SBS	STORM DRAIN CROSSING NEAR 210TH PLACE SE REVISION
2	10/20/18	NKW	SBS	STORM DRAIN CROSSING NEAR 211TH PLACE SE REVISION
3	11/20/18	NKW	SBS	PAVEMENT AT 210TH PLACE SE REVISION

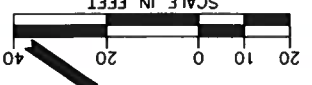
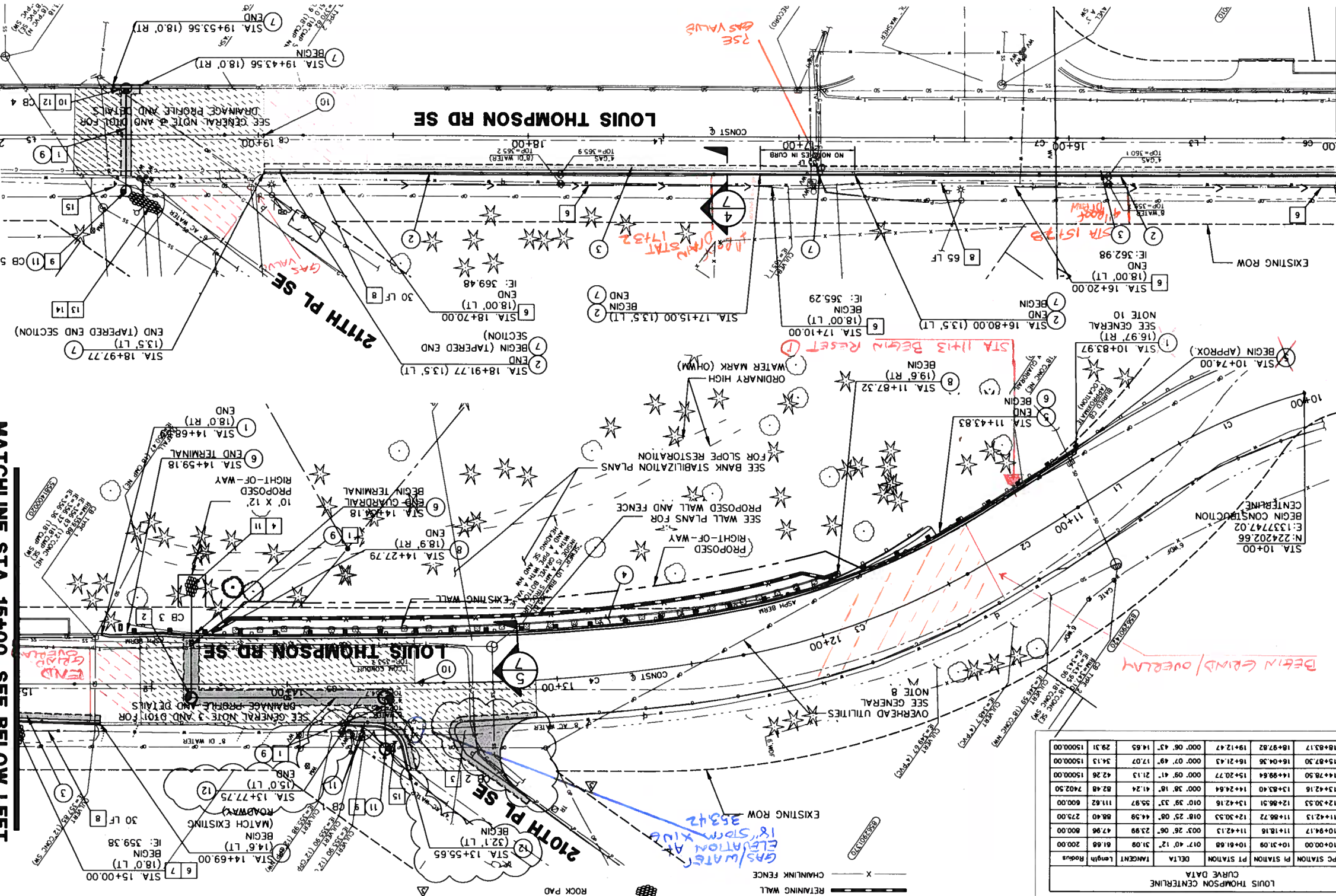
JOB#: C05A0022
DSGN: NKW
DRN: OXA
CHKD: MTF
DATE: 11/21/2018
SCALE: AS NOTED

DAVID EVANS AND ASSOCIATES INC.
14432 SE Eastgate Way, Suite 400
Bellevue Washington 98007
Phone: 425.519.6500



CITY OF SAMMAMISH
LOUIS THOMPSON ROAD SE SLIDE REPAIR AND DRAINAGE IMPROVEMENTS
KING COUNTY WASHINGTON

MATCHLINE STA. 15+00, SEE ABOVE RIGHT



- GENERAL NOTES**
- DIMENSIONS PROVIDED ARE TO FACE OF CURB UNLESS OTHERWISE NOTED.
 - CONTRACTOR TO VERIFY UTILITY CROSSINGS PRIOR TO CONSTRUCTION.
 - DRAINAGE STRUCTURE STATIONS AND OFFSETS ARE TO THE CENTER OF STRUCTURE. SEE DRAINAGE PROFILE ON SHEET D01 FOR ADDITIONAL INFORMATION. CONTRACTOR TO ADJUST STRUCTURES TO FINAL GRADE.
 - ALL STRUCTURES SHALL HAVE BOLT DOWN ROUND SOLID METAL COVER PER SPWS 7-13 UNLESS OTHERWISE NOTED.
 - ALL STORM SEWER PIPE SHALL BE POLYPROPYLENE STORM SEWER PIPE UNLESS OTHERWISE NOTED.
 - SEE WALL DRAWINGS FOR LOCATION AND DETAILS.
 - EXCAVATION FOR ROADSIDE BIORETENTION SHALL NOT EXPOSE MORE THAN 20 FT OF DUCTILE IRON WATERMAIN AT A TIME. EXCAVATION FOR STORMRAIN PIPE AND STRUCTURES SHALL NOT EXPOSE MORE THAN 3 FT OF ASBESTOS CEMENT WATERMAIN AT A TIME.
 - CONTRACTOR TO COORDINATE CONSTRUCTION SCHEDULE WITH UTILITIES PRIOR TO WALL INSTALLATION.
 - CONTRACTOR TO PROVIDE ACCESS TO EXISTING UTILITIES AT ALL TIMES.
 - EXTENDED CURB ENDS AT EXISTING BURIED GATE INLET IN THIS APPROXIMATE LOCATION.

- MATCHLINE STA. 15+00, SEE BELOW LEFT**
- INSTALL 6-INCH EXPOSED HEIGHT QUARRY SPALL DAM ACROSS THE WIDTH OF THE ROADSIDE BIORETENTION. EMBED BASE OF QUARRY SPALL DAM AN ADDITIONAL 3-INCH IN DEPTH PER DETAIL ON SHEET D102.
 - RE-GRADE TRANSITION V-DITCH BETWEEN ROADSIDE BIORETENTION TO EXISTING CULVERT. PROTECT EXISTING CULVERTS. V-DITCH TO BE RESEDED PER LANDSCAPING PLANS.
 - INSTALL CATCH BASIN TYPE 2 - 48 IN. DIAM. WITH DEBRIS CAGE PER SPWS 7-03 AND 7-07.
 - CONNECT CATCH BASIN TO EXISTING STORM DRAIN PIPE.
 - INSTALL BEVELED END PIPE WITH TRASH RACK PER SPWS 7-01 AND 7-02.
 - INSTALL CATCH BASIN TYPE 2 - 48 IN. DIAM. PER SPWS 7-07 WITH VAVED GRATE PER SPWS 7-16.
 - ARMOR DITCH WITH QUARRY SPALL. APPROX. 15 LF LENGTH X 1.5 LF WIDTH X 0.5 LF DEPTH.
 - RAISE AND PROTECT VALVES WITHIN QUARRY SPALLS.
 - INSTALL TYPE 2 OBJECT MARKER OM-2V, 4- FEET VERTICAL FROM BOTTOM TO ROAD SURFACE PER MUTCD. ENGINEER TO FIELD LOCATE.

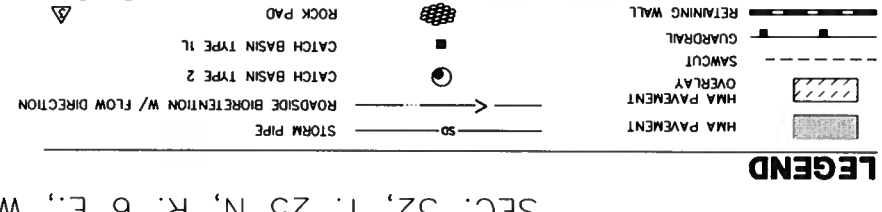
- CONSTRUCTION NOTES**
- STANDARD PLAN C-2010-04 FOR PLACEMENT WITH EXSTENDED CURB. SEE WSDOT STANDARD PLAN C-2010-04 FOR PLACEMENT WITH EXSTENDED CURB.
 - END TO BE RELATED TO END OF NEW GUARDRAIL LIMITS. SEE WSDOT STANDARD PLAN C-2010-04 FOR PLACEMENT WITH EXSTENDED CURB.
 - INSTALL BEAM GUARDRAIL TYPE 31 PER WSDOT STD. PLAN C-2010-04. SEE WSDOT STANDARD PLAN C-2010-04 FOR PLACEMENT WITH EXSTENDED CURB.
 - EXSTENDED CURB PLACEMENT WITH GUARDRAIL. FACE OF EXSTENDED CURB TO NOT PROTRUDE BEYOND FACE OF GUARDRAIL.
 - INSTALL NOTCHED CURB AND GUTTER PER DETAIL ON SHEET D102.
 - HMA PAVEMENT PER DETAIL ON SHEET D101.
 - WALL LIMITS PER DETAIL ON SHEET D101.
 - INSTALL 6-INCH CRUSHED SURFACING BASE COURSE ABOVE FINISHED PER SPWS 3-18.
 - TRENCH-PAVEMENT RESTORATION: 6-INCH HMA PAVEMENT IN TWO LIFTS (2-INCH OVER 4-INCH LIFT). CRUSHED BASE COURSE AND BALLAST THICKNESS PER SPWS 2-05A.
 - 2-INCH PAVEMENT OVERLAY. PAVEMENT TO MATCH EXISTING GRADE.
 - HMA PAVEMENT OVERLAY LIMITS PER SPWS 2-05B.
 - CONNECT TO EXISTING SPECIAL PROVISION SECTION 7-13.
 - INSTALL MEDIAN CURB AND GUTTER PER SPWS 3-08A.

LOUIS THOMPSON CENTERLINE

Curve #	PC STATION	PI STATION	PT STATION	DELTA	TANGENT Length	Radius
C1	10+00.00	10+31.09	10+47.12	47.12	61.66	200.00
C2	10+47.12	11+18.16	11+42.13	74.99	47.96	800.00
C3	11+42.13	11+66.71	12+30.53	88.40	27.00	600.00
C4	12+30.53	13+42.16	14+24.64	114.11	24.00	600.00
C5	13+42.16	14+24.64	15+24.64	82.48	24.00	600.00
C6	14+24.64	15+20.77	16+04.36	79.72	24.13	1500.00
C7	15+20.77	16+21.43	16+04.36	100.66	29.31	1500.00
C8	16+04.36	16+21.43	16+21.43	17.07	14.53	1500.00

LOUIS THOMPSON CENTERLINE LINE DATA TABLE

LINE #	LENGTH	BEARING	START STATION	END STATION	START POINT	END POINT
L1	32.49	S67.10°11.61'E	10+47.12	10+61.66	N:224157.52 E:133779.14	N:224157.52 E:133782.08
L2	53.87	S34.25°49.58'E	14+24.64	14+78.50	N:223933.58 E:133608.56	N:223989.15 E:133608.82
L3	66.53	S34.35°30.76'E	15+20.77	15+87.30	N:223854.32 E:133817.77	N:223799.56 E:133815.54
L4	261.74	S34.27°41.43'E	16+21.43	18+83.17	N:223771.44 E:133817.48	N:223555.63 E:133822.99
L5	142.63	S34.34°24.41'E	19+12.47	20+55.11	N:22351.48 E:133839.60	N:223414.04 E:133842.53



SEC. 32, T. 25 N, R. 6 E, W.M.

WED66

CALL 48 HOURS
BEFORE YOU DIG
1-800-424-5555

NO.	DATE	BY	APPR	REVISION
09/2018		MKW	SBS	STORM DRAIN CROSSING NEAR 210TH PLACE SE REVISION
10/2018		MKW	SBS	STORM DRAIN CROSSING NEAR 211TH PLACE SE REVISION

JOB#: C05A0022
DRN: OVA
CHD: MLF
DATE: 10/2018
SCALE: AS NOTED

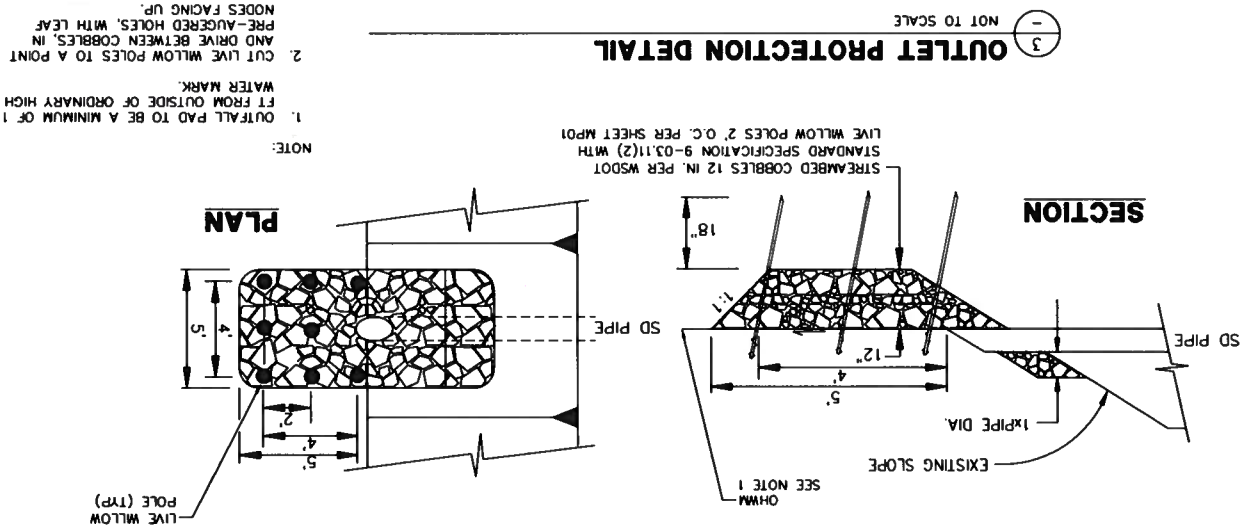
DAVID EVANS AND ASSOCIATES INC.
14422 SE Eastgate Way, Suite 400
Bellevue Washington 98007
Phone: 425.519.6500



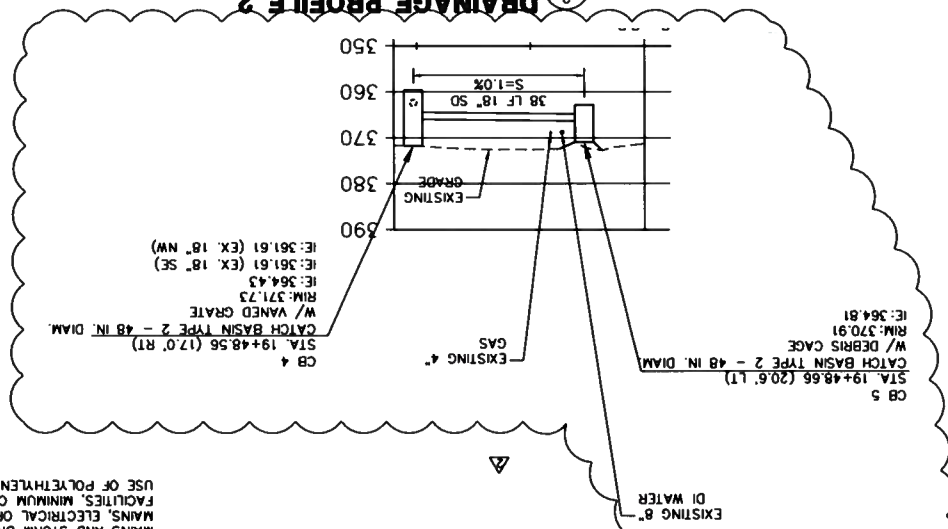
CITY OF SAMMAMISH
AND DRAINAGE IMPROVEMENTS
LOUIS THOMPSON ROAD SE SLIDE REPAIR
WASHINGTON
KING COUNTY

DT01
7 OF 16

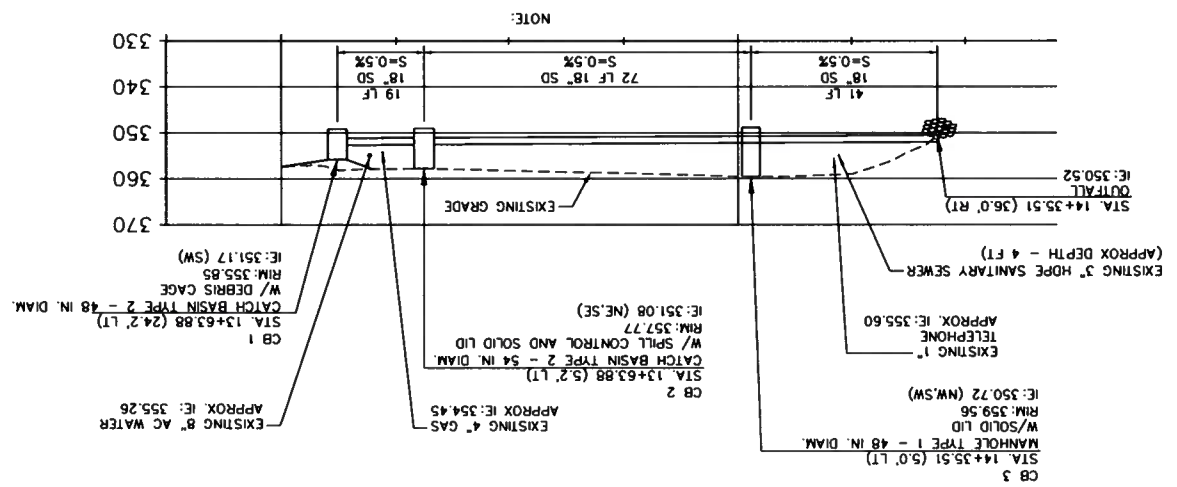
3 OUTLET PROTECTION DETAIL
NOT TO SCALE



2 DRAINAGE PROFILE 2
NOT TO SCALE



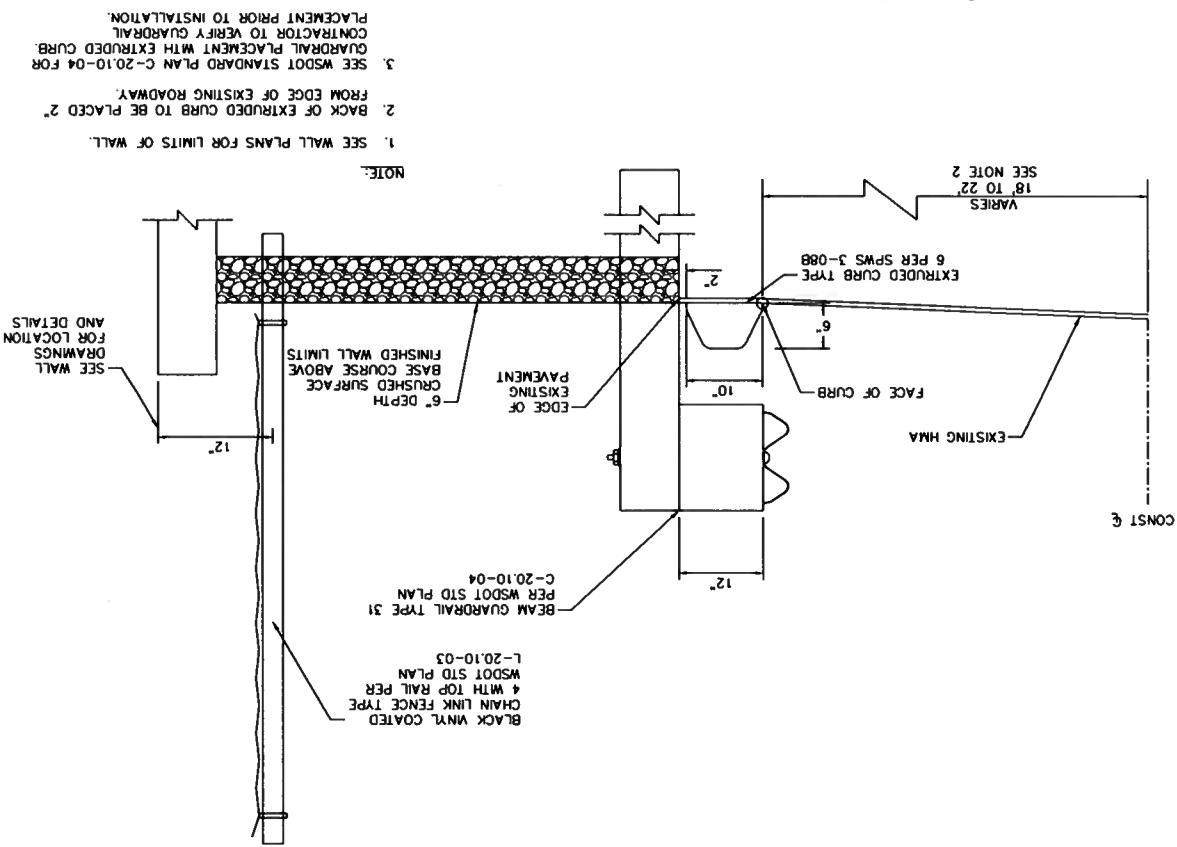
1 DRAINAGE PROFILE 1
NOT TO SCALE



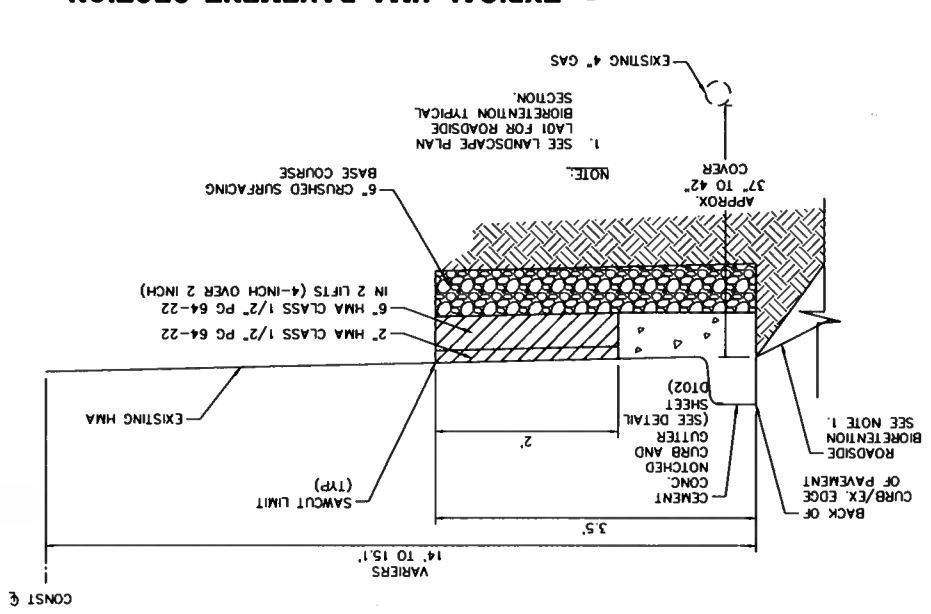
NOTE:

- APPROXIMATE LOCATION OF UTILITY CROSSINGS. CONTRACTOR TO VERIFY PRIOR TO CONSTRUCTION.
- WATERMAIN THRUST BLOCKS SHOULD NOT BE EXPOSED.
- EXCAVATION FOR STORMDRAIN PIPE AND STRUCTURES SHALL NOT EXPOSE MORE THAN 3 FT OF ASBESTOS CEMENT WATERMAIN AT A TIME.
- PER SPECIAL PROVISION 7-08, THE MINIMUM CLEARANCE SPACING BETWEEN THE OUTSIDE OF WATER MAINS AND STORM DRAIN PIPES, MAINS AND STORM DRAIN PIPES, SHALL BE 18 INCHES. FOR STORM DRAIN CROSSINGS WITH GAS MAINS, ELECTRICAL OR COMMUNICATION CONDUITS, AND SEWER PIPE AND OTHER UNDERGROUND UTILITY FACILITIES, MINIMUM CLEARANCE SPACING SHALL BE 12 INCHES. IF CLEARANCE IS NOT POSSIBLE, THE USE OF POLYETHYLENE FOAM PADS MAY BE ALLOWED WITH APPROVAL FROM THE ENGINEER.

5 CURB AND BEAM GUARDRAIL SECTION
NOT TO SCALE



4 TYPICAL HMA PAVEMENT SECTION
NOT TO SCALE



CONST &

CALL 48 HOURS BEFORE YOU DIG
1-800-424-5555

NO.	DATE	BY	APPR	REVISION

JOB#: COSA022
DSGN: NKW
CHKD: MLF
DATE: 5/22/2018
SCALE: AS NOTED

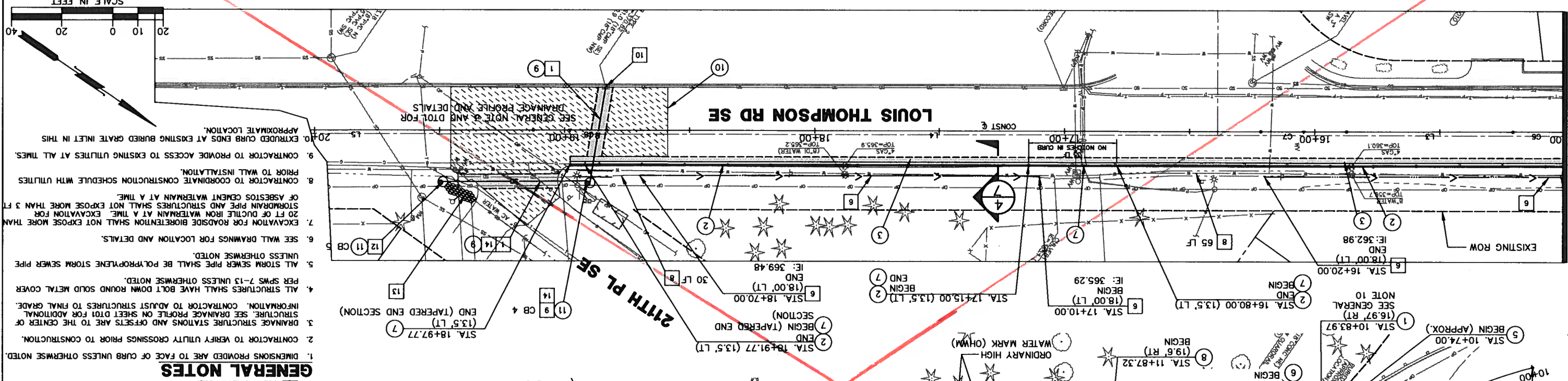
DAVID EVANS AND ASSOCIATES INC.
14432 SE Eastgate Way, Suite 400
Bellevue Washington 98007
Phone: 425.519.6500



CITY OF SAMMAMISH
LOUIS THOMPSON ROAD SE SLIDE REPAIR AND DRAINAGE IMPROVEMENTS
KING COUNTY WASHINGTON

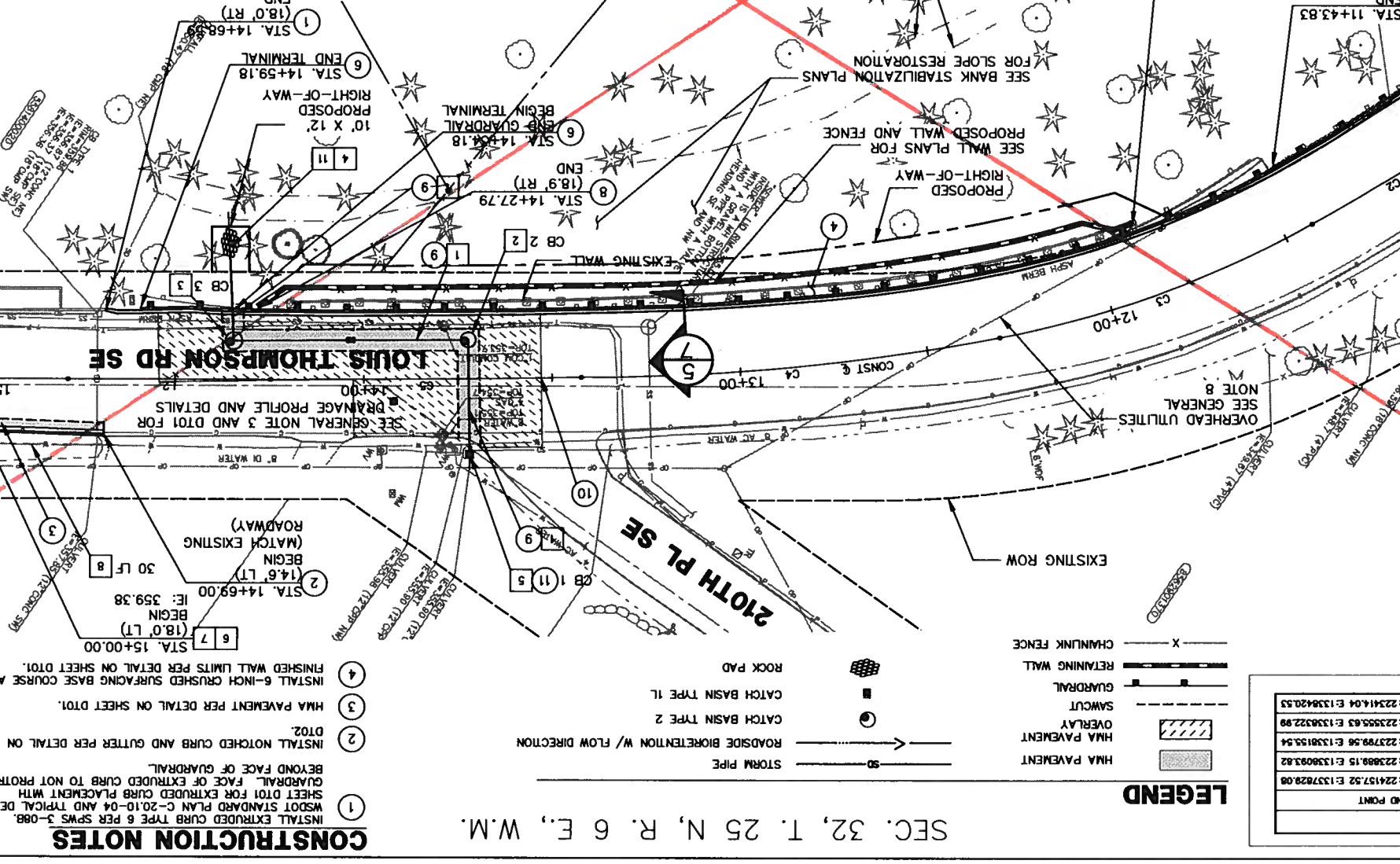
RD01
6 OF 16

MATCHLINE STA. 15+00, SEE ABOVE RIGHT



- GENERAL NOTES**
- DIMENSIONS PROVIDED ARE TO FACE OF CURB UNLESS OTHERWISE NOTED.
 - CONTRACTOR TO VERIFY UTILITY CROSSINGS PRIOR TO CONSTRUCTION.
 - DRAINAGE STRUCTURES AND OFFSETS ARE TO THE CENTER OF STRUCTURE. SEE DRAINAGE PROFILE ON SHEET D01 FOR ADDITIONAL INFORMATION. CONTRACTOR TO ADJUST STRUCTURES TO FINAL GRADE.
 - ALL STRUCTURES SHALL HAVE BOLT DOWN ROUND SOLID METAL COVER PER SPWS 7-13 UNLESS OTHERWISE NOTED.
 - ALL STORM SEWER PIPE SHALL BE POLYPROPYLENE STORM SEWER PIPE UNLESS OTHERWISE NOTED.
 - SEE WALL DRAWINGS FOR LOCATION AND DETAILS.
 - EXCAVATION FOR ROADSIDE BIORETENTION SHALL NOT EXPOSE MORE THAN 20 FT OF DUCTILE IRON WATERMAIN AT A TIME. EXCAVATION FOR STORMDRAIN PIPE AND STRUCTURES SHALL NOT EXPOSE MORE THAN 3 FT OF ASBESTOS CEMENT WATERMAIN AT A TIME.
 - CONTRACTOR TO COORDINATE CONSTRUCTION SCHEDULE WITH UTILITIES PRIOR TO WALL INSTALLATION.
 - CONTRACTOR TO PROVIDE ACCESS TO EXISTING UTILITIES AT ALL TIMES. EXPOSED CURB ENDS AT EXISTING BURIED GRATE INLET IN THIS APPROXIMATE LOCATION.
- CONSTRUCTION NOTES**
- REMOVE AND RESET EXISTING GUARDRAIL. PROTECT REMOVED LIMITS. SEE WSDOT STANDARD PLAN C-20-10-04 FOR PLACEMENT WITH EXTRUDED CURB.
 - INSTALL EXTRUDED CURB TYPE 6 PER SPWS 3-08B. SEE TERMINAL END TO BE RETOCCOURED TO END OF NEW GUARDRAIL LIMITS. SEE WSDOT STANDARD PLAN C-20-10-04 FOR PLACEMENT WITH EXTRUDED CURB.
 - INSTALL BEAM GUARDRAIL TYPE 31 PER WSDOT STD. PLAN C-20-10-04. SEE WSDOT STANDARD PLAN C-20-10-04 FOR PLACEMENT WITH EXTRUDED CURB. SEE TYPICAL DETAIL ON SHEET D01 FOR SECTION ALONG WALL LIMITS. RELOCATED TERMINAL END TO BE PLACED AT END OF NEW GUARDRAIL.
 - INSTALL TYPE A CURB AND GUTTER PER SPWS 3-08A.
 - INSTALL BLACK VINYL COATED CHAIN LINK FENCE TYPE 4 WITH TOP RAIL PER SPWS 3-18.
 - TRENCH-PAVEMENT RESTORATION: 6-INCH HMA PAVEMENT IN TWO LIFTS (2-INCH OVER 4-INCH LIFT). CRUSHED BASE COURSE AND BALLAST THICKNESS PER SPWS 2-05A.
 - GRADE: HMA PAVEMENT OVERLAY. PAVEMENT TO MATCH EXISTING 2-INCH PAVEMENT OVERLAY.
 - CONTRACTOR TO PORTHOLE PER SPECIAL PROVISION SECTION 7-13.
 - INSTALL POLYPROPYLENE STORM SEWER PIPE 18 IN. DIAM.
 - INSTALL CATCH BASIN TYPE 2 - 48 IN. DIAM. PER SPWS 7-07.
 - INSTALL CATCH BASIN TYPE 2 - 54 IN. DIAM. WITH SPILL CONTROL PER SPWS 7-25.
 - INSTALL 5' LENGTH X 5' LENGTH X 1' DEPTH OUTFALL PAD AS OUTLET PROTECTION PER DETAIL ON SHEET D01.
 - INSTALL CATCH BASIN TYPE 1L PER SPWS 7-05 WITH BEEHIVE PER DETAIL ON SHEET D02.
 - CONSTRUCT ROADSIDE BIORETENTION PER DETAIL ON SHEET LA01. SEE GENERAL NOTE 7 THIS SHEET.
 - INSTALL 6-INCH EXPOSED HEIGHT QUARRY SPALL DAM ACROSS THE WIDTH OF THE ROADSIDE BIORETENTION. EMBED BASE OF QUARRY SPALL DAM AN ADDITIONAL 3-INCH IN DEPTH PER DETAIL ON SHEET D02.
 - RE-GRADE TRANSITION V-DITCH BETWEEN ROADSIDE BIORETENTION TO EXISTING CULVERT. PROTECT EXISTING PLANS. BE RESEDED PER LANDSCAPING PLANS.
 - INSTALL CATCH BASIN TYPE 2 - 48 IN. DIAM. WITH DEBRIS CAGE PER SPWS 7-03 AND 7-07.
 - CONNECT TO EXISTING STRUCTURE.
 - INSTALL BEVELED END PIPE WITH TRASH RACK PER SPWS 7-01 AND 7-02.
 - INSTALL CATCH BASIN TYPE 2 - 48 IN. DIAM. PER SPWS 7-07 WITH BEEHIVE PER DETAIL ON SHEET D02.
 - ARMOR DITCH WITH QUARRY SPALL. APPROX. 15' LF LENGTH X 1.5' LF WIDTH X 0.5' LF DEPTH.
 - FOR CB 4, OFFSET 18-INCH STORM DRAIN PIPE CROSSING 211TH TO CLEAR UTILITY POLE.
- DRAINAGE NOTES**
- DIMENSIONS PROVIDED ARE TO FACE OF CURB UNLESS OTHERWISE NOTED.
 - CONTRACTOR TO VERIFY UTILITY CROSSINGS PRIOR TO CONSTRUCTION.
 - DRAINAGE STRUCTURES AND OFFSETS ARE TO THE CENTER OF STRUCTURE. SEE DRAINAGE PROFILE ON SHEET D01 FOR ADDITIONAL INFORMATION. CONTRACTOR TO ADJUST STRUCTURES TO FINAL GRADE.
 - ALL STRUCTURES SHALL HAVE BOLT DOWN ROUND SOLID METAL COVER PER SPWS 7-13 UNLESS OTHERWISE NOTED.
 - ALL STORM SEWER PIPE SHALL BE POLYPROPYLENE STORM SEWER PIPE UNLESS OTHERWISE NOTED.
 - SEE WALL DRAWINGS FOR LOCATION AND DETAILS.
 - EXCAVATION FOR ROADSIDE BIORETENTION SHALL NOT EXPOSE MORE THAN 20 FT OF DUCTILE IRON WATERMAIN AT A TIME. EXCAVATION FOR STORMDRAIN PIPE AND STRUCTURES SHALL NOT EXPOSE MORE THAN 3 FT OF ASBESTOS CEMENT WATERMAIN AT A TIME.
 - CONTRACTOR TO COORDINATE CONSTRUCTION SCHEDULE WITH UTILITIES PRIOR TO WALL INSTALLATION.
 - CONTRACTOR TO PROVIDE ACCESS TO EXISTING UTILITIES AT ALL TIMES. EXPOSED CURB ENDS AT EXISTING BURIED GRATE INLET IN THIS APPROXIMATE LOCATION.

MATCHLINE STA. 15+00, SEE BELOW LEFT



LOUIS THOMPSON CENTERLINE CURVE DATA

Curve #	PC STATION	PT STATION	DELTA	TANGENT Length	Radius
C1	10+00.00	10+31.08	07° 40' 12"	31.08	200.00
C2	10+94.17	11+18.16	11° 42' 43"	23.98	47.96
C3	11+42.13	11+96.72	08° 25' 08"	44.59	88.40
C4	12+30.53	12+96.51	07° 35' 35"	55.87	111.62
C5	13+42.16	13+83.40	00° 38' 18"	41.24	7402.50
C6	14+78.50	14+98.64	15+20' 77"	00° 08' 41"	21.73
C7	15+87.30	16+04.36	16+21' 43"	00° 07' 49"	17.07
C8	16+83.17	18+97.82	18+97' 82"	00° 06' 43"	14.65

LOUIS THOMPSON CENTERLINE LINE DATA TABLE

LINE #	LENGTH	BEARING	START STATION	END STATION	START POINT	END POINT
L1	32.49	S67° 10' 11.81"E	10+94.17	10+94.17	N: 22470.12 E: 132779.14	N: 22451.52 E: 132782.08
L2	53.87	S34° 25' 48.90"E	14+24.64	14+24.64	N: 22393.58 E: 132803.36	N: 22388.15 E: 132809.82
L3	66.53	S34° 35' 30.78"E	15+87.30	15+87.30	N: 22389.32 E: 132817.77	N: 22389.56 E: 132815.54
L4	261.74	S34° 27' 43.73"E	16+21.43	16+21.43	N: 22371.44 E: 132817.88	N: 22355.63 E: 132822.88
L5	142.83	S34° 34' 24.61"E	18+12.47	18+12.47	N: 22351.48 E: 132833.80	N: 22341.04 E: 132842.53

LEGEND

- HMA PAVEMENT
- OVERLAY
- ROADSIDE BIORETENTION W/ FLOW DIRECTION
- GUARDRAIL
- RETAINING WALL
- CHAINLINK FENCE
- HMA PAVEMENT
- OVERLAY
- ROADSIDE BIORETENTION W/ FLOW DIRECTION
- GUARDRAIL
- RETAINING WALL
- CHAINLINK FENCE

SEC. 32, T. 25 N, R. 6 E., W.M.

CALL 48 HOURS
BEFORE YOU DIG
1-800-424-5555

NO.	DATE	BY	APP	REVISION
1	09/2018	NKW	SBS	STORM DRAIN CROSSING NEAR 210TH PLACE SE REVISION
2	11/2018	NKW	SBS	PAVING AT 210TH PLACE SE REVISION

JOB#: C08A0022
EWO
DRN:
MCF
DATE: 11/12/2018
SCALE: AS NOTED

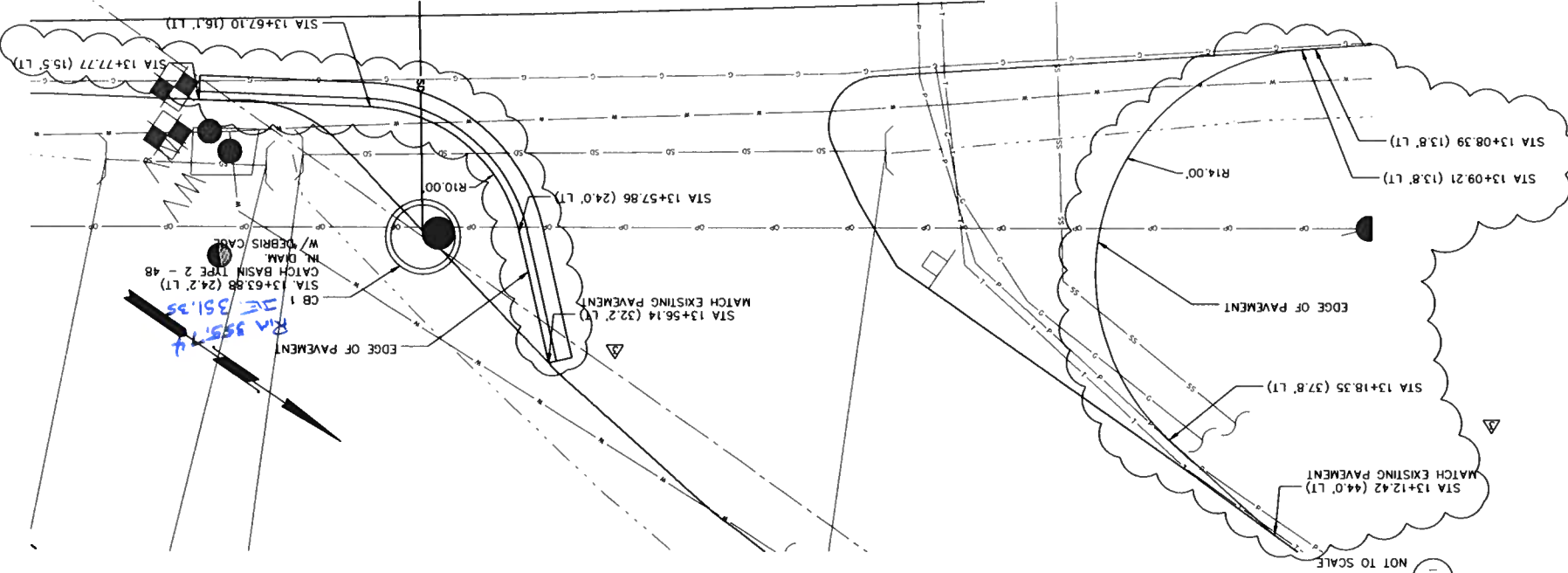
DE
DAVID EVANS AND ASSOCIATES INC.
1432 SE Eastgate Way, Suite 400
Bellevue Washington 98007
Phone: 425.519.5500



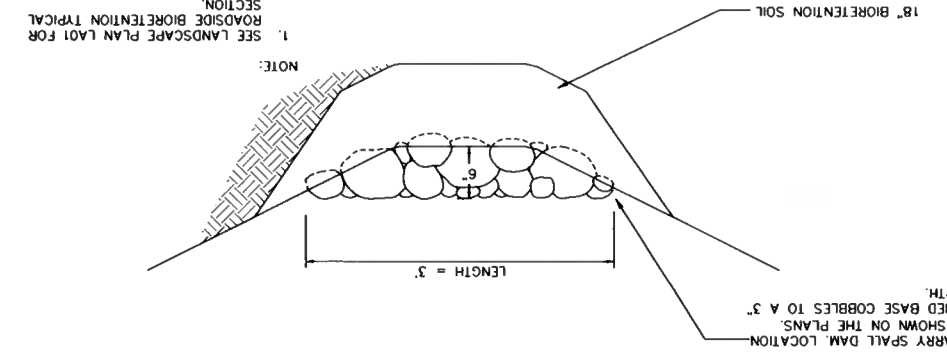
CITY OF SAMMAMISH
LOUIS THOMPSON ROAD SE SLIDE REPAIR
AND DRAINAGE IMPROVEMENTS
WASHINGTON
KING COUNTY

DT02
8 OF 16

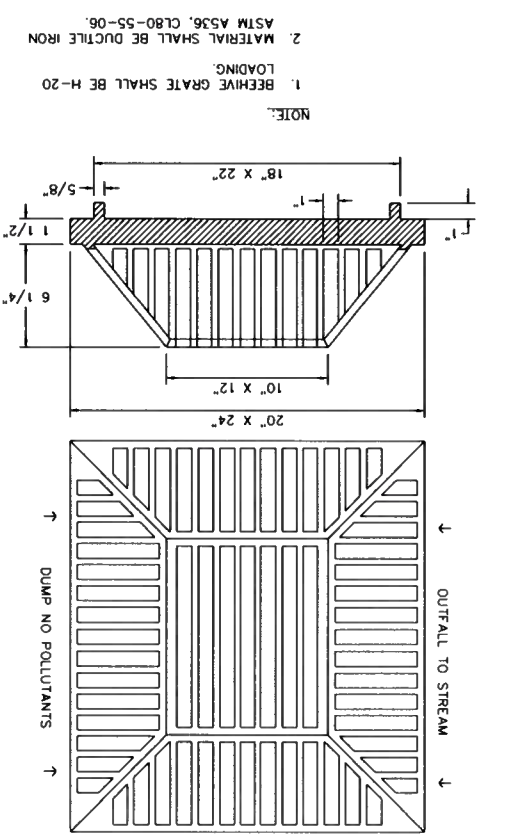
5 210TH DETAIL
NOT TO SCALE



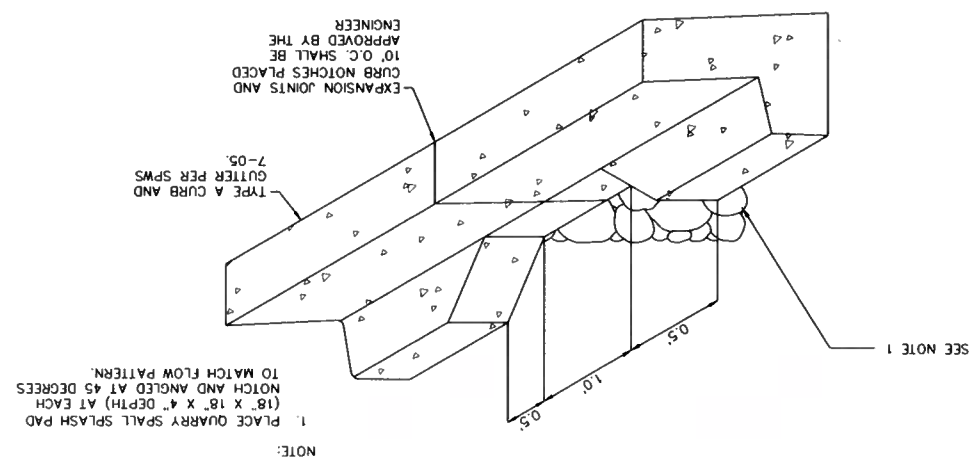
2 QUARRY SPALL DAM DETAIL
NOT TO SCALE



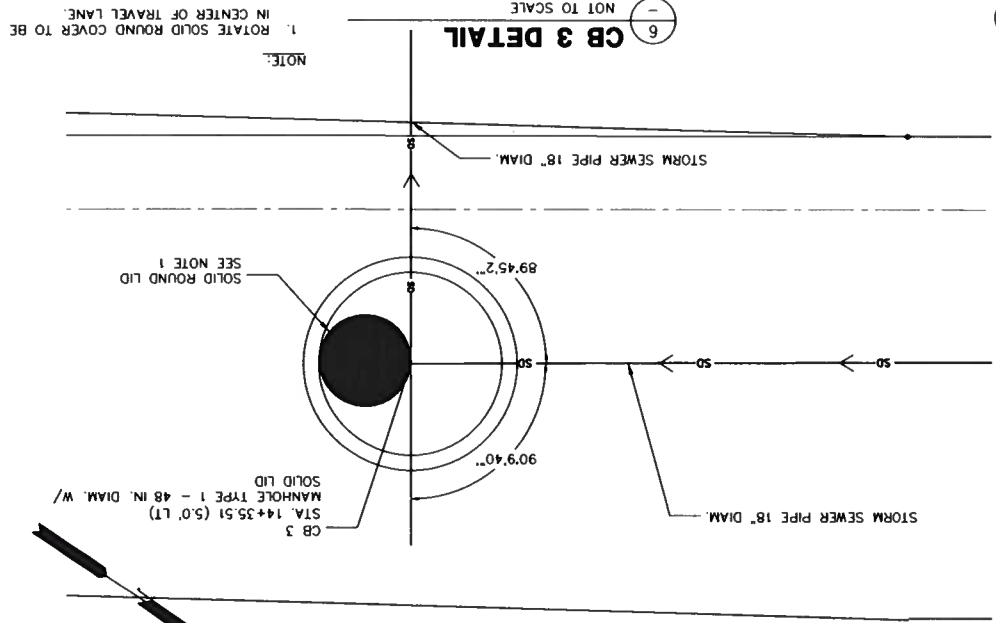
3 BEEHIVE GRATE DETAIL
NOT TO SCALE



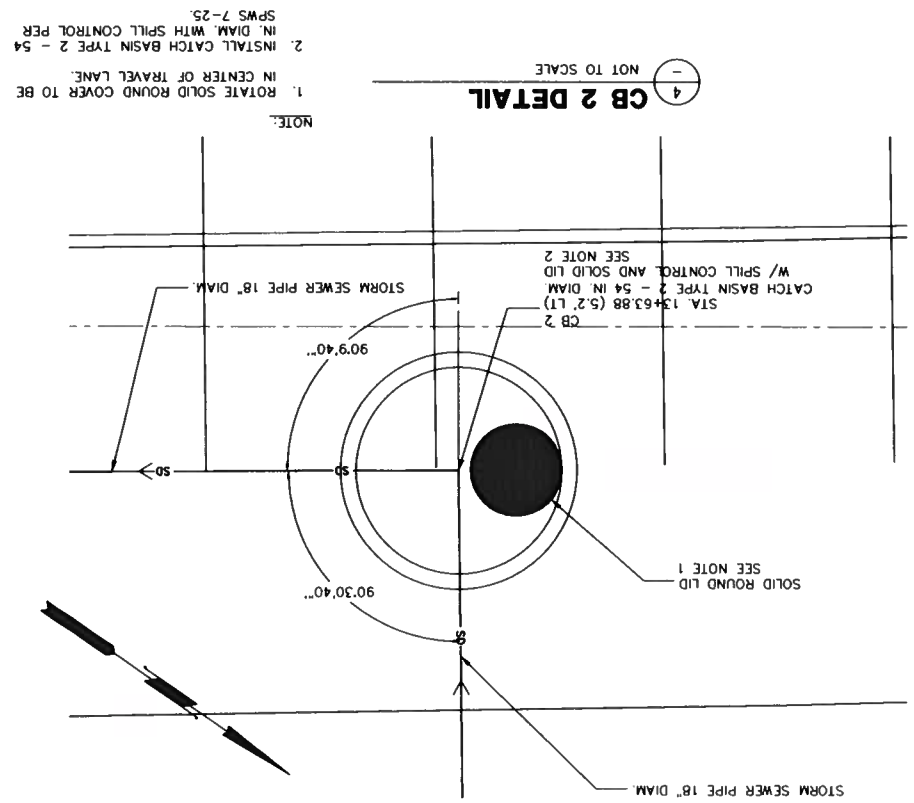
1 CEMENT CONCRETE NOTCHED CURB AND GUTTER DETAIL
NOT TO SCALE



6 CB 3 DETAIL
NOT TO SCALE



4 CB 2 DETAIL
NOT TO SCALE



By: NKW Date: 8/24 AM File: P:\C:\G05A00000022\04000AD\111\SHEETS\11-D1-001-C05A0022.dwg Layout: DT02

CALL 48 HOURS
BEFORE YOU DIG
1-800-424-5555

NO.	DATE	BY	APPR.

JOB#: C05A0022
 DSGN: EWSB
 DRN: EWSB
 CHKD: MCF
 DATE: 5/22/2018
 SCALE: AS NOTED

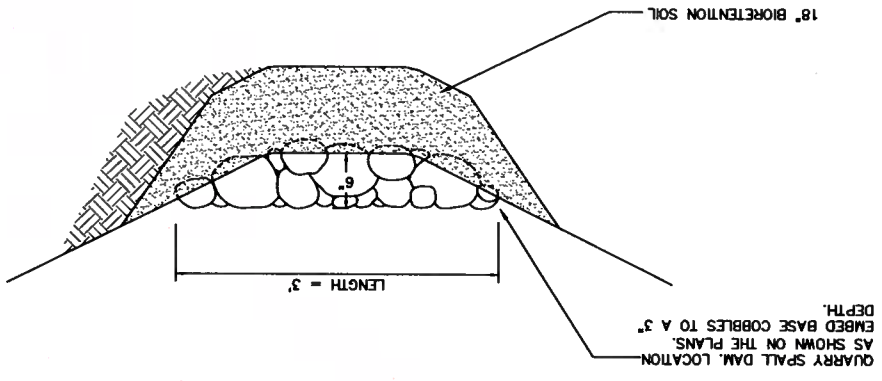
DE AND ASSOCIATES INC.
DAVID EVANS
 1432 SE Eastgate Way, Suite 400
 Bellevue Washington 98007
 Phone: 425.519.6500



CITY OF SAMMAMISH
LOUIS THOMPSON ROAD SE SLIDE REPAIR
AND DRAINAGE IMPROVEMENTS
 KING COUNTY
 WASHINGTON

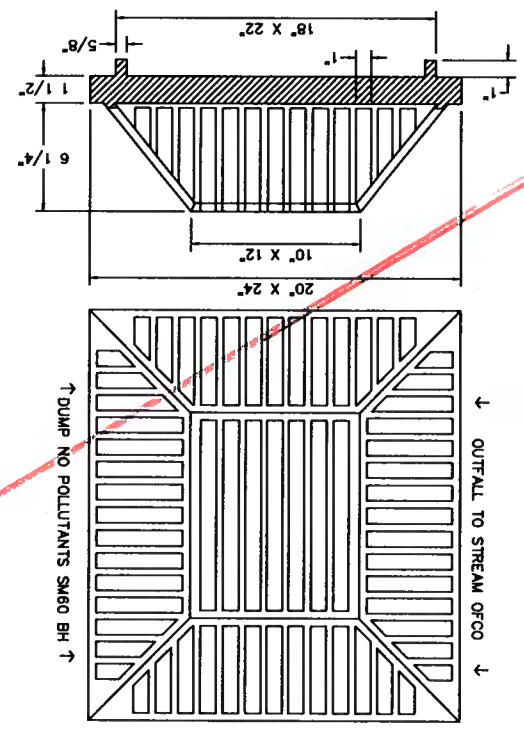
DT02
 8 OF 16

2 QUARRY SPALL DAM DETAIL
 NOT TO SCALE



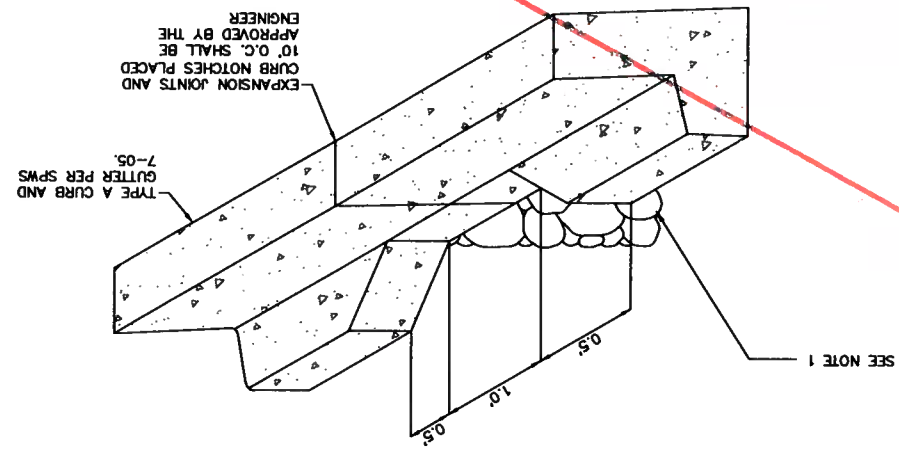
NOTE:
 1. SEE LANDSCAPE PLAN LA01 FOR ROADSIDE BIORETENTION TYPICAL SECTION.
 2. QUARRY SPALL DAM WIDTH = 1 FT.

3 BEEHIVE GRATE DETAIL
 NOT TO SCALE



NOTE:
 1. BEEHIVE GRATE SHALL BE H-20 LOADING.
 2. MATERIAL SHALL BE DUCTILE IRON ASTM A536, CL80-55-06.

1 CEMENT CONCRETE NOTCHED CURB AND GUTTER DETAIL
 NOT TO SCALE



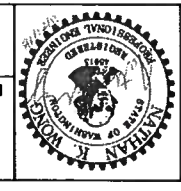
NOTE:
 1. PLACE QUARRY SPALL SPLASH PAD (18" X 18" X 4" DEPTH) AT EACH NOTCH AND ANGLED AT 45 DEGREES TO MATCH FLOW PATTERN.
 EXPANSION JOINTS AND CURB NOTCHES PLACED 10' O.C. SHALL BE APPROVED BY THE ENGINEER.

CALL 48 HOURS BEFORE YOU DIG
1-800-424-5555

NO.	DATE	BY	REVISION
1	09/20/18	NKW	SBS STORM DRAIN CROSSING NEAR 210TH PLACE SE REVISION
2	11/20/18	NKW	SBS PAVEMENT AT 210TH PLACE SE REVISION

JOB#: G05A0022
DSGN: NKW
DRN: OXA
CHKD: MLF
DATE: 11/21/2018
SCALE: AS NOTED

DAVID EVANS AND ASSOCIATES INC.
14432 SE Eastgate Way, Suite 400
Bellevue Washington 98007
Phone: 425.519.6500



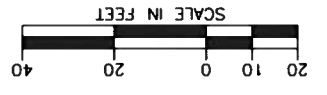
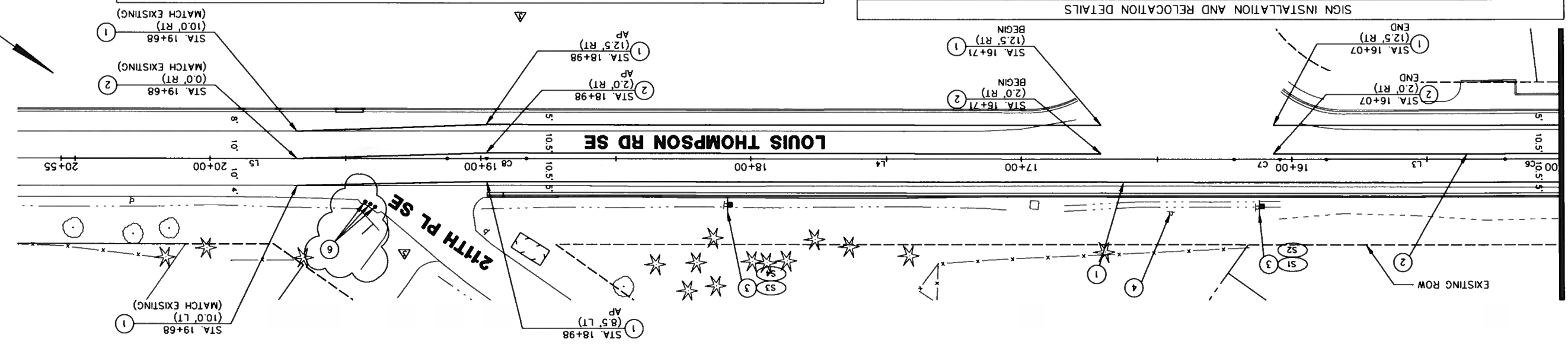
CITY OF SAMMAMISH
LOUIS THOMPSON ROAD SE SLIDE REPAIR AND DRAINAGE IMPROVEMENTS
KING COUNTY WASHINGTON

CH01
9 OF 16

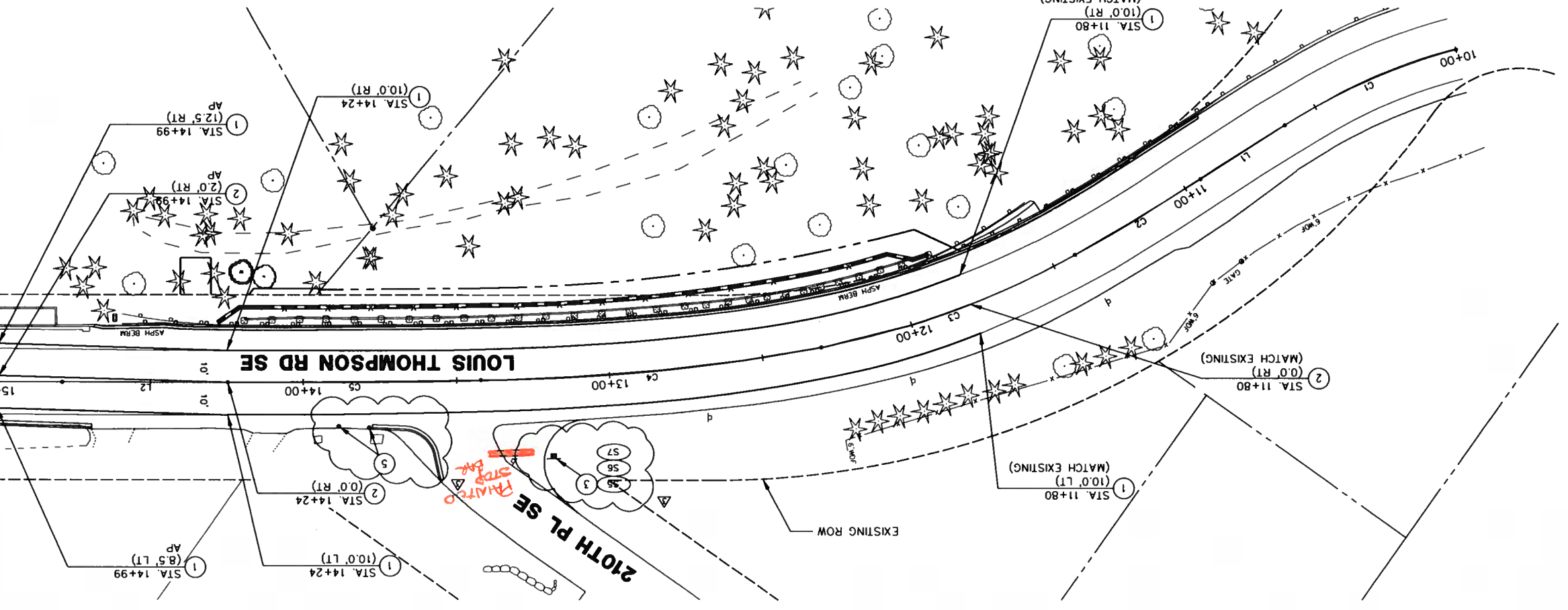
SIGN NO.	SIGN DESIGNATION	SIGN DESCRIPTION	STATION (OFFSET)	SIGN WIDTH (X)	SIGN HEIGHT (Y)	POST LENGTH	VERTICAL CLEARANCE	REMARKS
S1	W13-1	ADVISORY SPEED	16+12 (17.0' LT)	18"	18"	15'	7'	20 MPH
S2	W13-2L	REVERSE TURN	16+12 (17.0' LT)	30"	30"	--	--	MOUNT ABOVE SIGN S1
S3	W7-3B	HILL PLAQUE	18+09 (17.0' LT)	24"	18"	15'	7'	8% 3/4 MILE
S4	W7-1	HILL	18+09 (17.0' LT)	30"	30"	--	--	MOUNT ABOVE SIGN S3

SIGN NO.	SIGN DESIGNATION	SIGN DESCRIPTION	STATION (OFFSET)	SIGN WIDTH (X)	SIGN HEIGHT (Y)	POST LENGTH	VERTICAL CLEARANCE	REMARKS
S5	R1-1	STOP SIGN	13+19 (25.5' LT)	30"	30"	15'	7'	20 MPH
S6	D3-1	210TH PL SE	13+19 (25.5' LT)	30"	9"	--	--	MOUNT ABOVE SIGN S5
S7	D3-1	LOUIS THOMPSON ROAD SE	13+19 (25.5' LT)	30"	9"	--	--	MOUNT ABOVE SIGN S6

MATCHLINE STA. 15+00, SEE ABOVE RIGHT



MATCHLINE STA. 15+00, SEE BELOW LEFT



- CONSTRUCTION NOTES**
1. 4" WHITE PAINTED LINE PER SPWS 4-03A.
 2. PAINTED DOUBLE YELLOW CENTERLINE STRIPE PER SPWS 4-03A. INSTALL TYPE ZYY RPMs AT 40' O.C. PER SPWS 4-03B.
 3. REMOVE AND REPLACE EXISTING PERMANENT SIGNAGE. SEE SIGN SCHEDULE THIS SHEET. SIGN INSTALLATION PER SPWS 4-06.
 4. PROTECT EXISTING SIGNAGE.
 5. INSTALL 18-INCH SURFACE MOUNTED WHITE DELINEATOR POSTS WITH REFLECTIVE TAPE, INLINE WITH GUTTER PAN, 10 FT O.C.
 6. INSTALL 18-INCH SURFACE MOUNTED WHITE DELINEATOR POSTS WITH REFLECTIVE TAPE, 2 FT O.C.
- ROADWAY LEGEND**
- SI NEW SIGN LOCATION
 - EXISTING SIGN
 - PROPOSED SIGN
- SIGN NOTES**
1. FOR PERMANENT SIGNING, YELLOW ADVISORY SIGNS SHALL HAVE MUTED COMPLIANT VERTICAL RETROREFLECTIVE STRIPS INSTALLED ON SIGN SUPPORTS.
 2. RETROREFLECTIVE MATERIAL USED ON THE SIGN SUPPORT SHALL BE AT LEAST 2 INCHES IN WIDTH. IT SHALL BE PLACED FOR THE FULL LENGTH OF THE SUPPORT FROM THE SIGN TO WITHIN 2 FEET ABOVE THE EDGE OF THE ROADWAY, AND ITS COLOR SHALL MATCH THE BACKGROUND COLOR OF THE SIGN, EXCEPT THAT THE COLOR OF THE STRIP FOR THE YIELD AND DO NOT ENTER SIGNS SHALL BE RED. MS-2 SHIELD OR APPROVED EQUAL.

CALL 48 HOURS BEFORE YOU DIG
1-800-424-6555

NO.	DATE	BY	APPR	REVISION

JOB#: COSA022
DSGN: NKW
CHKD: MLF
DATE: 5/22/2018
SCALE: AS NOTED

DAVID EVANS AND ASSOCIATES, INC.
1432 SE Eastgate Way, Suite 400
Bellevue Washington 98007
Phone: 425.519.6500



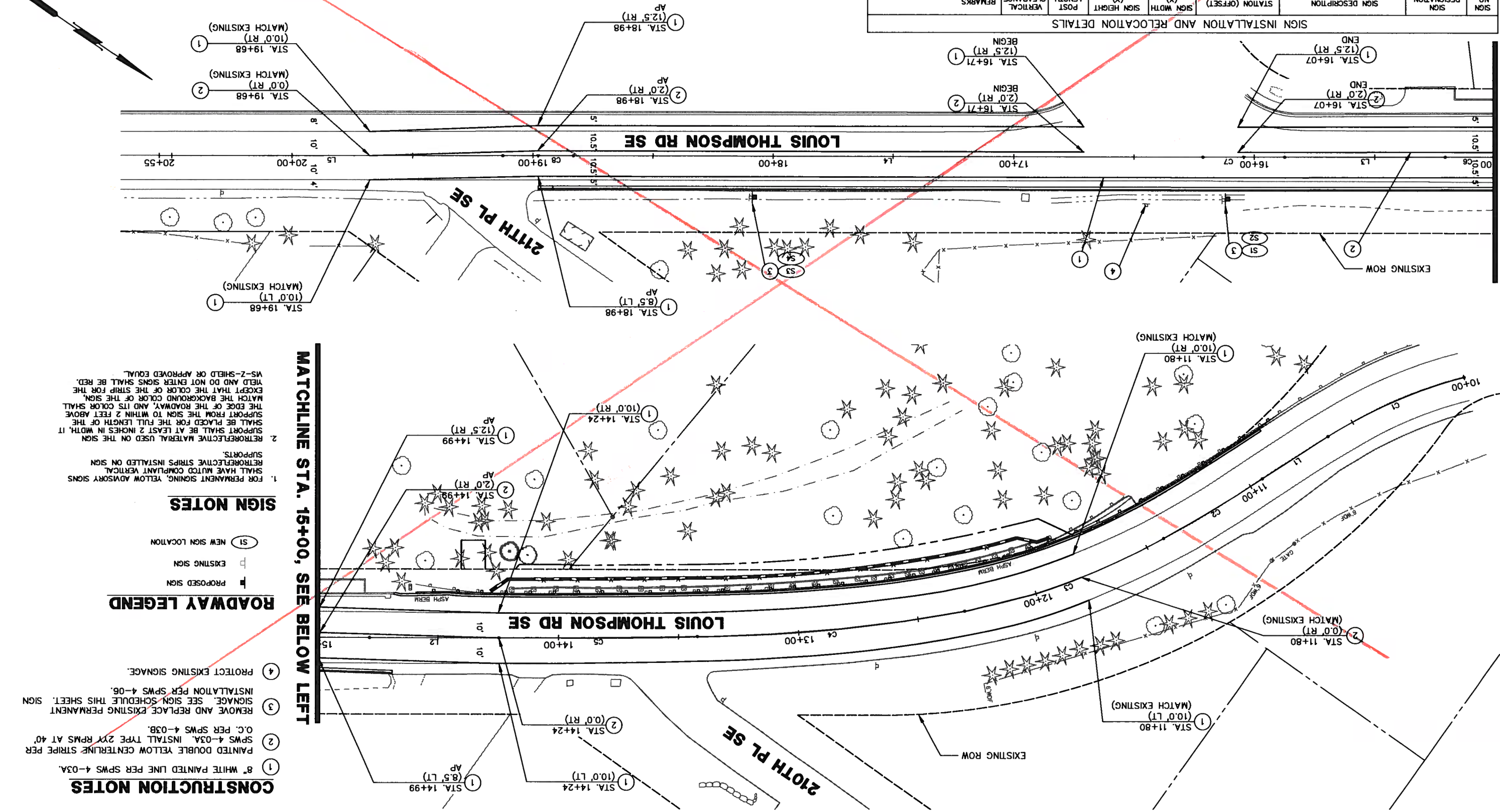
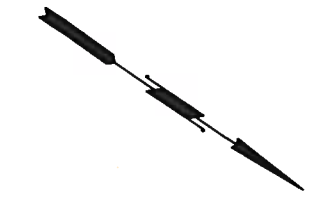
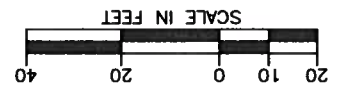
CITY OF SAMMAMISH
LOUIS THOMPSON ROAD SE SLIDE REPAIR AND DRAINAGE IMPROVEMENTS
KING COUNTY WASHINGTON

CH01
9 OF 16

SIGN NO.	SIGN DESIGNATION	SIGN DESCRIPTION	STATION (OFFSET)	SIGN WIDTH (X)	SIGN HEIGHT (Y)	POST LENGTH	CLEARANCE	REMARKS
S1	W1-1	ADVISORY SPEED	16+12 (17.0' LT)	18"	18"	15'	7'	20 MPH
S2	W1-2L	REVERSE TURN	16+12 (17.0' LT)	30"	30"	--	--	MOUNT ABOVE SIGN S1
S3	W7-3B	HILL PLAQUE	18+08 (17.0' LT)	24"	18"	15'	7'	8% 3/4 MILE
S4	W7-1	HILL	18+09 (17.0' LT)	30"	30"	--	--	MOUNT ABOVE SIGN S3

SIGN INSTALLATION AND RELOCATION DETAILS

MATCHLINE STA. 15+00, SEE ABOVE RIGHT



MATCHLINE STA. 15+00, SEE BELOW LEFT

SIGN NOTES

- FOR PERMANENT SIGNING, YELLOW ADVISORY SIGNS SHALL HAVE MUTED COMPLIANT VERTICAL RETROREFLECTIVE STRIPS INSTALLED ON SIGN SUPPORTS.
- RETROREFLECTIVE MATERIAL USED ON THE SIGN SUPPORT SHALL BE AT LEAST 2 INCHES IN WIDTH. IT SHALL BE PLACED FOR THE FULL LENGTH OF THE SUPPORT FROM THE SIGN TO WITHIN 2 FEET ABOVE THE EDGE OF THE ROADWAY, AND ITS COLOR SHALL MATCH THE BACKGROUND COLOR OF THE SIGN, EXCEPT THAT THE COLOR OF THE STRIP FOR THE YIELD AND DO NOT ENTER SIGNS SHALL BE RED. V5-2-SHIELD OR APPROVED EQUAL.

ROADWAY LEGEND

- PROPOSED SIGN
- EXISTING SIGN
- NEW SIGN LOCATION

CONSTRUCTION NOTES

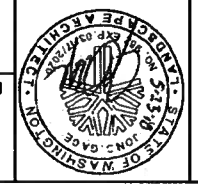
- 8" WHITE PAINTED LINE PER SPWS 4-03A.
- PAINTED DOUBLE YELLOW CENTERLINE STRIPE PER SPWS 4-03A. INSTALL TYPE 2XX RPMS AT 40' O.C. PER SPWS 4-03B.
- REMOVE AND REPLACE EXISTING PERMANENT SIGNAGE. SEE SIGN SCHEDULE THIS SHEET. SIGN INSTALLATION PER SPWS 4-06.
- PROTECT EXISTING SIGNAGE.

CALL 48 HOURS BEFORE YOU DIG
1-800-424-5555

NO.	DATE	BY	APPR	REVISION

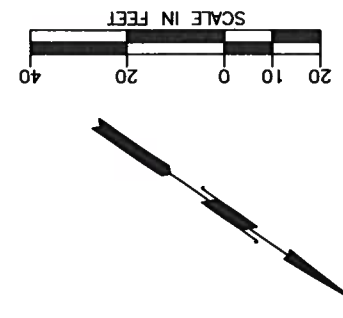
JOB#: C05A0022
DSGN: JCQA
DRN: GBK
CHKD: JCQA
DATE: 5/22/2018
SCALE: AS NOTED

DAVID EVANS AND ASSOCIATES INC.
14432 SE Eastgate Way, Suite 400
Bellevue Washington 98007
Phone: 425.519.6500



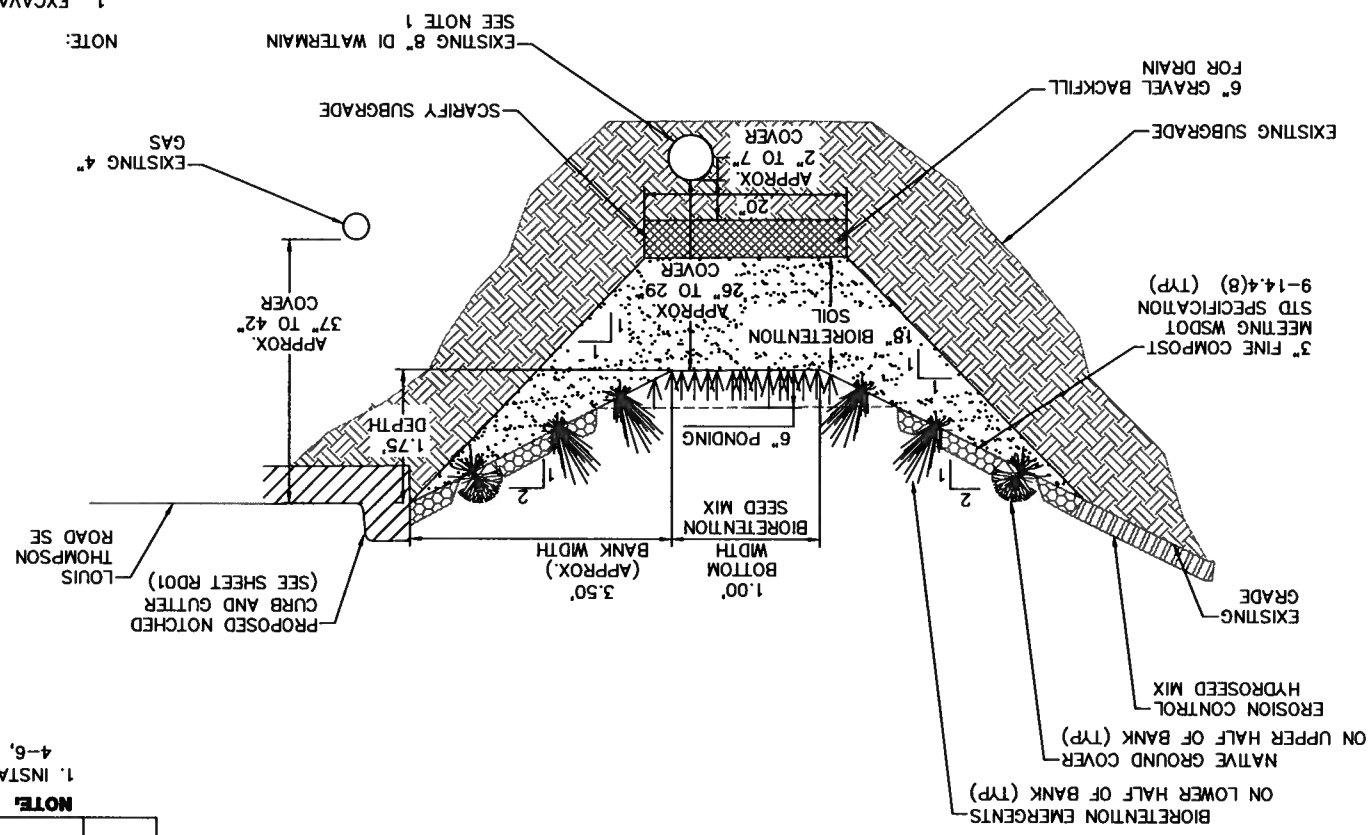
CITY OF SAMMAMISH
LOUIS THOMPSON ROAD SE SLIDE REPAIR AND DRAINAGE IMPROVEMENTS
KING COUNTY WASHINGTON

LA01
10 OF 16



NOTE:
1. EXCAVATION FOR ROADSIDE BIORETENTION SHALL NOT EXPOSE MORE THAN 20 FT OF WATERMAIN AT A TIME.

ROADSIDE BIORETENTION DETAIL



BIORETENTION HYDROSEED MIX

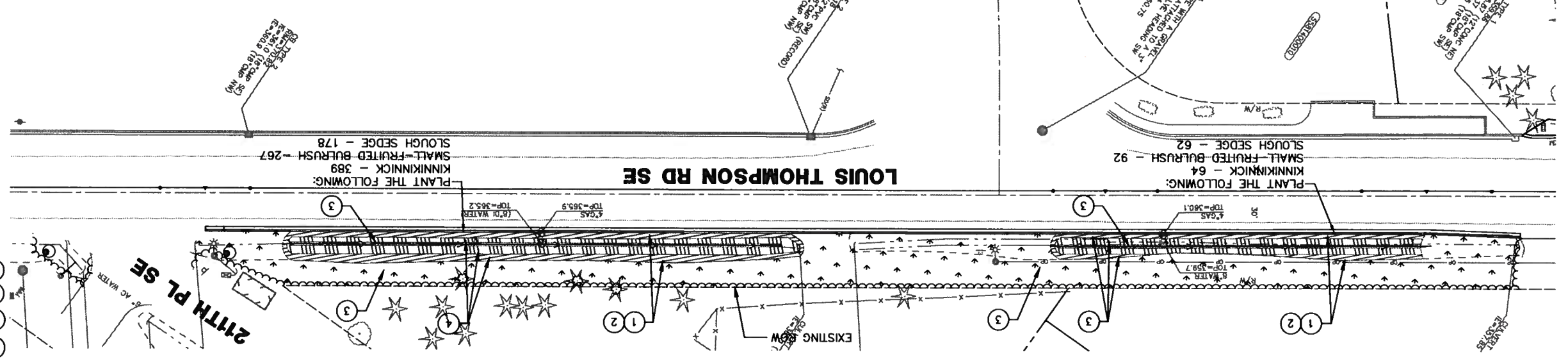
KIND/VARIETY	% BY WEIGHT	MIN. % GERMINATION
RICE CUTGRASS	45%	90%
WESTERN MANA GRASS	40%	90%
CANADA REED	10%	90%
SPIKE BENTGRASS	3%	90%
WOOL-GRASS	2%	90%

APPLICATION RATE: 75 LBS/ACRE
CANFOR WOOD CELLULOSE ECO-FIBER MULCH: 1,800 LBS/ACRE
FERTILIZER: NA
CANFOR ECO-TAC GUAR TACKIFIER: 80 LBS/ACRE

NOTE:
1. INSTALL SCIRPUS AND CAREX PLANTS IN RANDOM GROUPS OF 4-6, LIKE PLANTS PER GROUP AT 12" ON CENTER SPACING.

SYMBOL	BOTANICAL NAME	COMMON NAME	COND.	SPACING	QNTY	REMARKS
	CAREX OBNUPTA	SLOUGH SEDGE	ROOT STOCK	12" O.C.	240	FULL AND WELL BRANCHED, SEE NOTE 1
	SCIRPUS MICROCARPUS	SMALL-FRUITED BULRUSH	ROOT STOCK	12" O.C.	359	FULL AND WELL BRANCHED, SEE NOTE 1
	ARCTOSTAPHYLOS URVA-URSI	KINNICKINICK	4" POTS	12" O.C.	453	FULL WITH LEADERS

BIORETENTION PLANTING SCHEDULE



GENERAL NOTES
1. SEE THIS SHEET FOR BIORETENTION AREA PREPARATION

CONSTRUCTION NOTES
1. EXCAVATE 24" OF EXISTING SOIL
2. CONSTRUCT ROADSIDE BIORETENTION PER DETAIL THIS SHEET
3. SEEDING, FERTILIZING AND MULCHING
4. INSTALL BIORETENTION PLANTINGS

CALL 48 HOURS BEFORE YOU DIG
1-800-424-5555

NO.	DATE	BY	APPR	REVISION

JOB#: C05A022
DSCN: JCDA
DRN: OSK
CHKD: JCDA
DATE: 5/23/2018
SCALE: AS NOTED

DAVID EVANS AND ASSOCIATES INC.
14432 SE Eastgate Way, Suite 400
Bellevue Washington 98007
Phone: 425.519.6500



CITY OF SAMMAMISH
LOUIS THOMPSON ROAD SE SLIDE REPAIR AND DRAINAGE IMPROVEMENTS
KING COUNTY WASHINGTON

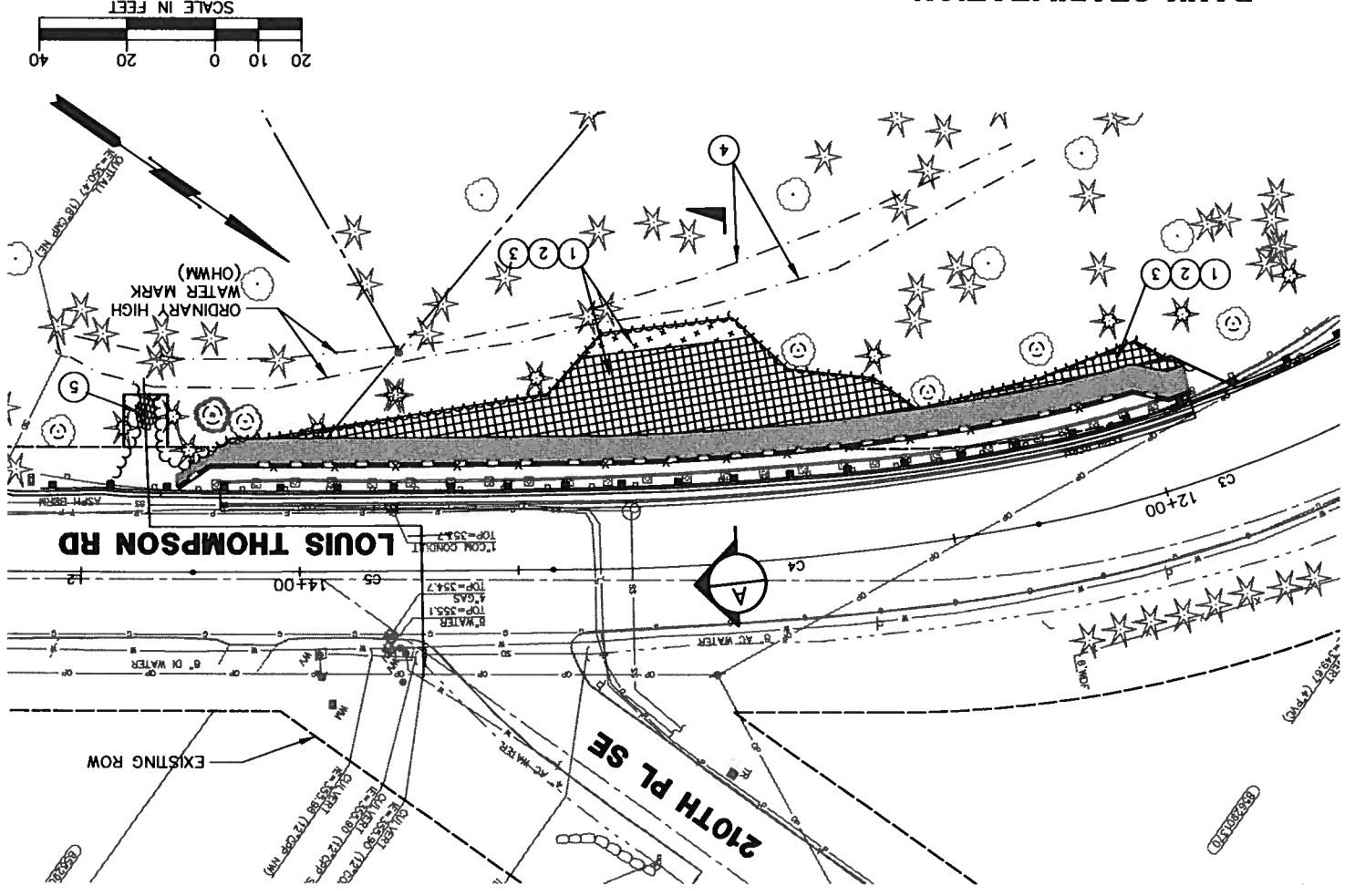
MP01
11 OF 16

B:\COS\A00000022\0400CA0\T\T\SHEETS\T1-MP-001-C05A022.dwg Layout: MP01

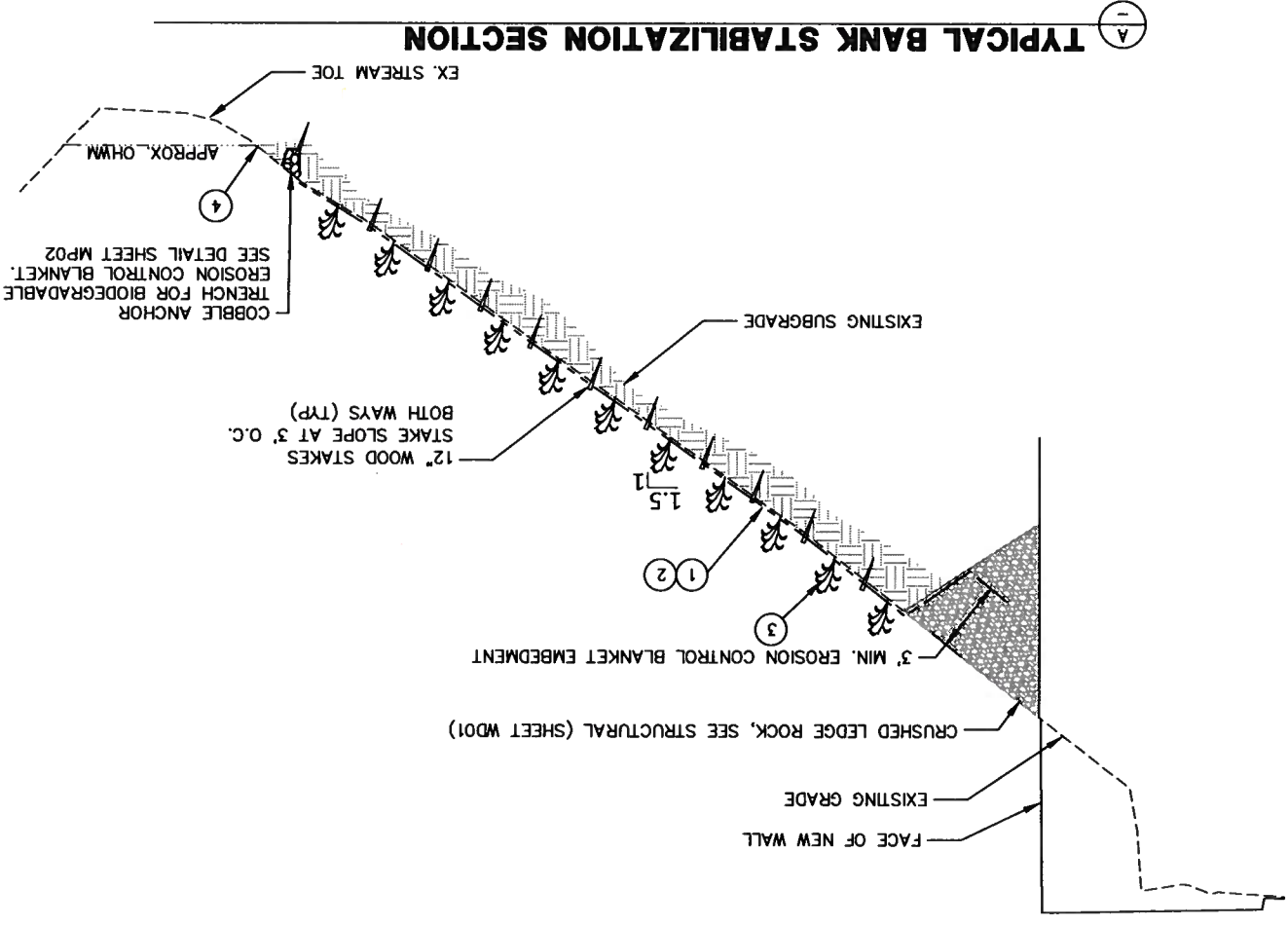
NOTES:
1. DISTRIBUTE PLANTS IN EACH PLANT SPECIES EQUALLY ACROSS THE SITE.
2. LOCATE IN RANDOM GROUPS OF 3-4 LIKE SPECIES.

BOTANICAL NAME	COMMON NAME	SIZE	COND.	SPACING	QNTY	REMARKS
ACER CIRCINATUM	VINE MAPLE	18"-24" HT. MIN.	2 GAL.	6' O.C.	10	MULTI-STEMMED, SEE NOTE 1
RUBUS PARVIFLORUS	THIMBLEBERRY	12"-16" HT. MIN.	1 GAL.	3' O.C.	41	FULL AND WELL BRANCHED, SEE NOTE 2
SYMPHORICARPOS ALBUS	SNOWBERRY	12"-16" HT. MIN.	1 GAL.	3' O.C.	62	FULL AND WELL BRANCHED, SEE NOTE 2
ROSA GYMNOCARPA	BALD-HIP ROSE	12"-16" HT. MIN.	1 GAL.	3' O.C.	41	FULL AND WELL BRANCHED, SEE NOTE 2
POLYSTICHUM MUNTNUM	SWORD FERN	12"-16" HT. MIN.	1 GAL.	3' O.C.	41	FULL AND WELL BRANCHED, SEE NOTE 2
SALIX SITCHENSIS	SITKA WILLOW	12"-16" HT. MIN.	1 GAL.	3' O.C.	15	FULL AND WELL BRANCHED
SALIX SITCHENSIS	SITKA WILLOW	1"-2" DIA. x 3.5' HT	POLES	2' O.C.	8	

BANK STABILIZATION PLANTING SCHEDULE



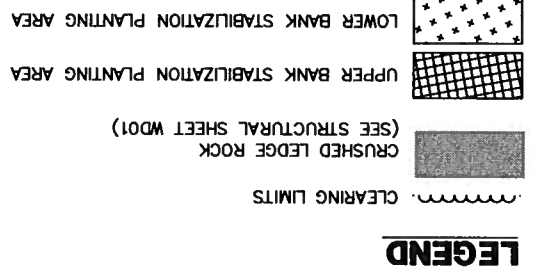
SEC. 32, T. 25 N., R. 6 E., W.M.



TYPICAL BANK STABILIZATION SECTION

GENERAL NOTES
1. SEE SHEET MP02 FOR PLANTING DETAILS AND BANKS STABILIZATION DETAIL.
2. INSTALL NATIVE PLANTINGS AND PIT-AMEND WITH 1:1 MIXTURE OF FINE COMPOST MEETING WSDOT STANDARD SPECIFICATION 9-14.4(B) AND NATIVE SOIL.
3. INSTALL NATIVE PLANTINGS AND PIT-AMEND WITH 1:1 MIXTURE OF FINE COMPOST MEETING WSDOT STANDARD SPECIFICATION 9-14.4(B) AND NATIVE SOIL.
4. NO WORK SHALL OCCUR BELOW THE ORDINARY HIGH WATER MARK (OHWM). CONTRACTOR SHALL SURVEY AND STAKE LIMITS OF OHWM PRIOR TO INSTALLATION OF HIGH VISIBILITY FENCE.
5. INSTALL WILLOW POLES AT OUTLET. SEE OUTLET PROTECTION DETAIL, SHEET D101 FOR LAYOUT.

CONSTRUCTION NOTES
1. CLEAR AND GRUB EXISTING VEGETATION AND COMPACT TO 85%.
2. INSTALL BIODEGRADABLE EROSION CONTROL BLANKET MEETING WSDOT STANDARD SPECIFICATION 9-14.5(2)B AND APPLY EROSION CONTROL SEEDING, FERTILIZING AND MULCHING.
3. INSTALL NATIVE PLANTINGS AND PIT-AMEND WITH 1:1 MIXTURE OF FINE COMPOST MEETING WSDOT STANDARD SPECIFICATION 9-14.4(B) AND NATIVE SOIL.
4. NO WORK SHALL OCCUR BELOW THE ORDINARY HIGH WATER MARK (OHWM). CONTRACTOR SHALL SURVEY AND STAKE LIMITS OF OHWM PRIOR TO INSTALLATION OF HIGH VISIBILITY FENCE.
5. INSTALL WILLOW POLES AT OUTLET. SEE OUTLET PROTECTION DETAIL, SHEET D101 FOR LAYOUT.



CALL 48 HOURS
BEFORE YOU DIG
1-800-424-5555

NO.	DATE	BY	APPR

JOB#: COSA0022
DSGN: JCQA
CHKD: JCQA
DATE: 5/22/2018
SCALE: AS NOTED

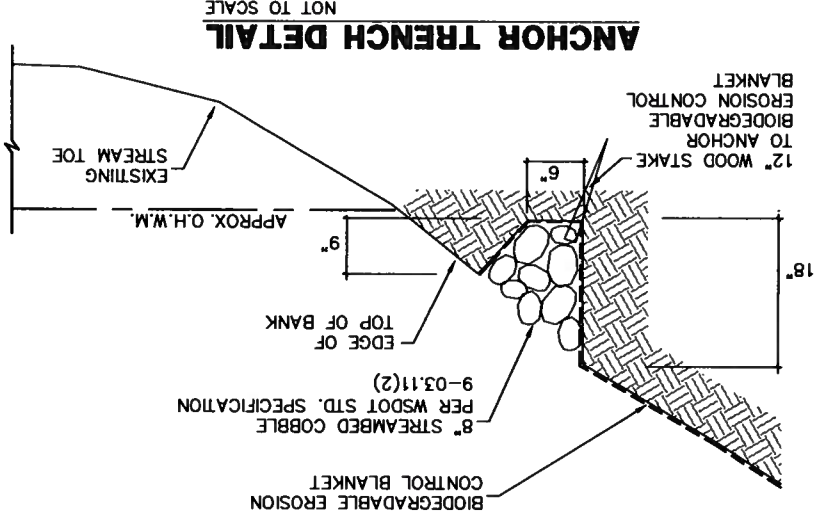
DAVID EVANS AND ASSOCIATES INC.
14432 SE Eastgate Way, Suite 400
Bellevue Washington 98007
Phone: 425.519.8500



CITY OF SAMMAMISH
LOUIS THOMPSON ROAD SE SLIDE REPAIR
AND DRAINAGE IMPROVEMENTS
KING COUNTY WASHINGTON

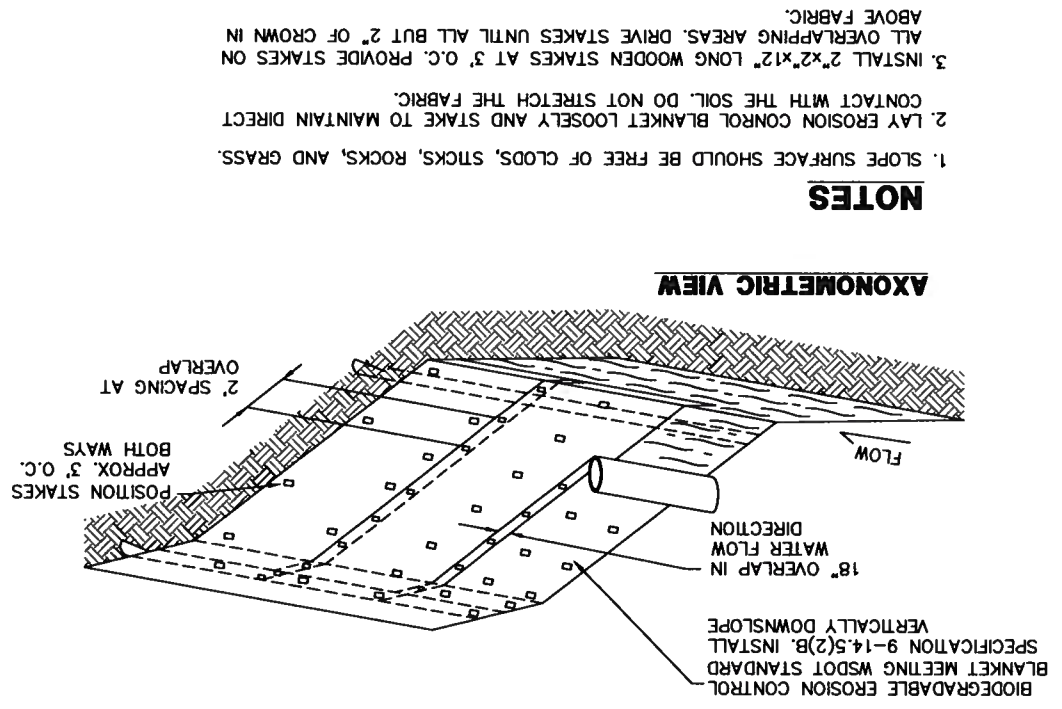
MP02

12 OF 16



ANCHOR TRENCH DETAIL
NOT TO SCALE

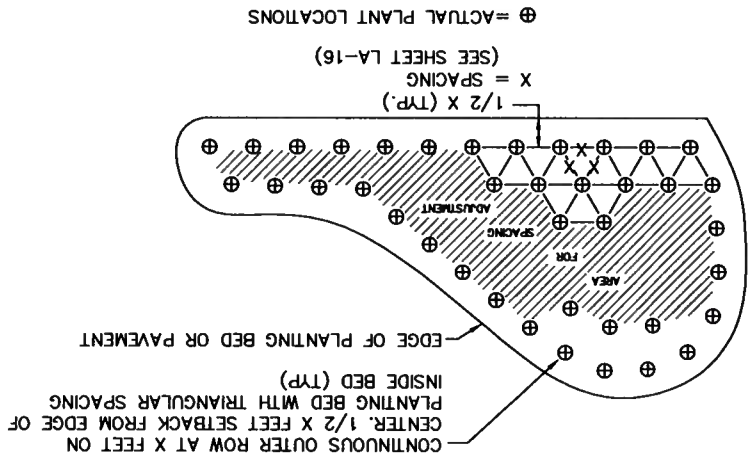
BIODEGRADABLE EROSION CONTROL BLANKET
NOT TO SCALE



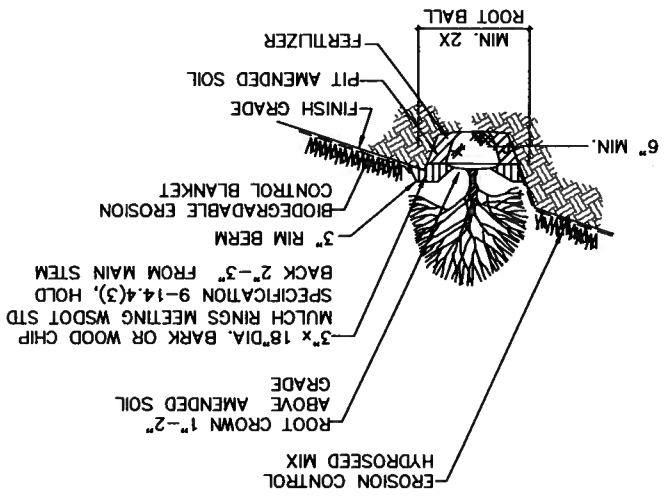
NOTES

1. SLOPE SURFACE SHOULD BE FREE OF CLOUDS, STICKS, ROCKS, AND GRASS.
2. LAY EROSION CONTROL BLANKET LOOSELY AND STAKE TO MAINTAIN DIRECT CONTACT WITH THE SOIL. DO NOT STRETCH THE FABRIC.
3. INSTALL 2"x2"x12" LONG WOODEN STAKES AT 3' O.C. PROVIDE STAKES ON ALL OVERLAPPING AREAS. DRIVE STAKES UNTIL ALL BUT 2" OF CROWN IS ABOVE FABRIC.

PLANTING SPACING
NOT TO SCALE



SHRUB PLANTING ON SLOPE
NOT TO SCALE



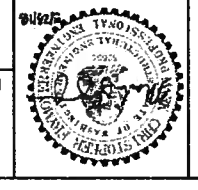
B:_NKW Date: 4:04 PM File: P:_COSA00000022\0400CAD\TT\SHEETS\TT-MP-002-COSA0022.dwg Layout: MP01

CALL 48 HOURS BEFORE YOU DIG
1-800-424-6655

NO.	DATE	BY	APPR	REVISION

JOB#: COSA0022
 DSGN: EWBO
 DRN: EWBO
 CHKD: MCF
 DATE: 5/22/2018
 SCALE: AS NOTED

DE
DAVID EVANS AND ASSOCIATES INC.
 14432 SE Eastgate Way, Suite 400
 Bellevue Washington 98007
 Phone: 425.519.6500



CITY OF SAMMAMISH
LOUIS THOMPSON ROAD SE SLIDE REPAIR AND DRAINAGE IMPROVEMENTS
 KING COUNTY
 WASHINGTON

WNO1
 13 OF 16

*STATIONS AND OFFSETS ARE BASED ON CONST 3 AND ARE TAKEN TO THE CENTER OF PILE SHAFT AND PILE SECTION.

PILE NO.	STATION*	OFFSET* (FT)	PILE SECTION	SHAFT DIAMETER	EMBEDMENT "D"	TOTAL PILE LENGTH
1	11+92.79	20.48	RT	W21X111	32'-6"	47'-3"
2	12+00.95	24.01	RT	W21X111	32'-6"	47'-6"
3	12+08.65	24.01	RT	W21X111	32'-6"	47'-7"
4	12+16.34	24.01	RT	W21X111	32'-6"	47'-10"
5	12+23.49	24.01	RT	W21X111	32'-6"	48'-0"
6	12+30.08	24.01	RT	W21X111	32'-6"	48'-2"
7	12+35.84	24.01	RT	W21X111	32'-6"	48'-6"
8	12+42.10	24.01	RT	W21X111	32'-6"	48'-10"
9	12+48.36	24.01	RT	W21X111	32'-6"	49'-2"
10	12+54.62	23.89	RT	W24X192	40'-6"	57'-6"
11	12+61.92	23.89	RT	W24X192	40'-6"	55'-11"
12	12+69.22	23.89	RT	W24X192	40'-6"	56'-2"
13	12+78.61	23.89	RT	W24X192	40'-6"	56'-7"
14	12+88.00	23.89	RT	W24X192	40'-6"	56'-11"
15	12+96.35	23.89	RT	W24X192	40'-6"	57'-3"
16	13+05.73	23.89	RT	W24X192	40'-6"	57'-8"
17	13+15.12	23.89	RT	W24X192	40'-6"	57'-11"
18	13+24.51	23.89	RT	W24X192	40'-6"	58'-2"
19	13+33.90	23.89	RT	W24X192	40'-6"	58'-5"
20	13+42.94	23.89	RT	W24X192	40'-6"	58'-8"
21	13+51.97	23.89	RT	W24X117	33'-6"	47'-7"
22	13+61.00	23.89	RT	W24X117	33'-6"	47'-10"
23	13+70.03	23.89	RT	W24X117	33'-6"	48'-1"
24	13+79.06	23.89	RT	W24X117	33'-6"	48'-4"
25	13+88.09	23.89	RT	W24X117	33'-6"	46'-0"
26	13+97.13	23.89	RT	W24X117	33'-6"	46'-4"
27	14+06.15	23.89	RT	W24X117	33'-6"	44'-6"
28	14+15.18	23.89	RT	W24X117	33'-6"	43'-7"
29	14+20.69	23.89	RT	W24X117	33'-6"	42'-7"
30	14+27.89	19.07	RT	W24X117	33'-6"	42'-9"

- ALL MATERIAL WORKMANSHIP SHALL BE IN ACCORDANCE WITH THE REQUIREMENTS OF THE WASHINGTON STATE DEPARTMENT OF TRANSPORTATION STANDARD SPECIFICATIONS FOR ROAD, BRIDGE AND MUNICIPAL CONSTRUCTION, DATED 2018, AND AMENDMENTS.
- THE STRUCTURE HAS BEEN DESIGNED IN ACCORDANCE WITH THE REQUIREMENTS OF THE AASHTO LRFD BRIDGE DESIGN SPECIFICATIONS - 7TH EDITION - 2014 WITH INTERIMS THRU 2016.
- STRUCTURAL STEEL FOR SOLDIER PILES SHALL CONFORM TO ASTM A992. SOLDIER PILES SHALL BE PAINTED TO THE LIMITS SHOWN IN THE PLANS IN ACCORDANCE WITH WSDOT STD. SPECIFICATION SECTION 6-16.3(4).
- THE SOLDIER PILE SHAFT SHALL BE BACKFILLED WITH EITHER CONTROLLED DENSITY FILL OR PUMPABLE LEAN CONCRETE IN ACCORDANCE WITH WSDOT STD. SPECIFICATION SECTION 6-16.3(5).
- EXISTING GROUND LINE IS APPROXIMATE AND SHALL BE VERIFIED BY THE CONTRACTOR IN THE FIELD PRIOR TO SHOP DRAWING PRODUCTION AND CONSTRUCTION.
- ALTERNATIVE PILE SECTIONS MAY BE SUBMITTED TO THE ENGINEER FOR APPROVAL. PILE SECTIONS SHOULD HAVE THE SAME OR GREATER SECTION MODULUS AND MOMENT OF INERTIA AND MAINTAIN A MINIMUM OF 3" CLEAR FROM THE EDGE OF THE SHAFT.

CALL 48 HOURS
BEFORE YOU DIG
1-800-424-5555

NO.	DATE	BY	APPR.	REVISION

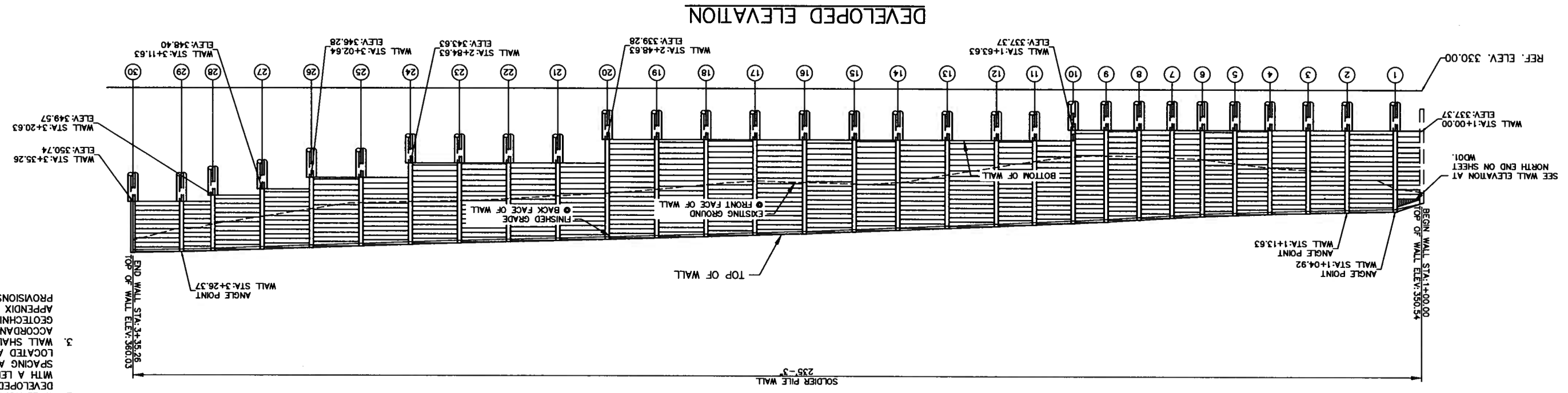
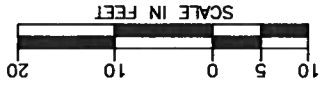
JOB#: COSA0022
DSGN: EWB0
CHKD: MCF
DATE: 9/22/2018
SCALE: AS NOTED

DAVID EVANS AND ASSOCIATES, INC.
14432 SE Eastgate Way, Suite 400
Bellevue Washington 98007
Phone: 425.519.6500



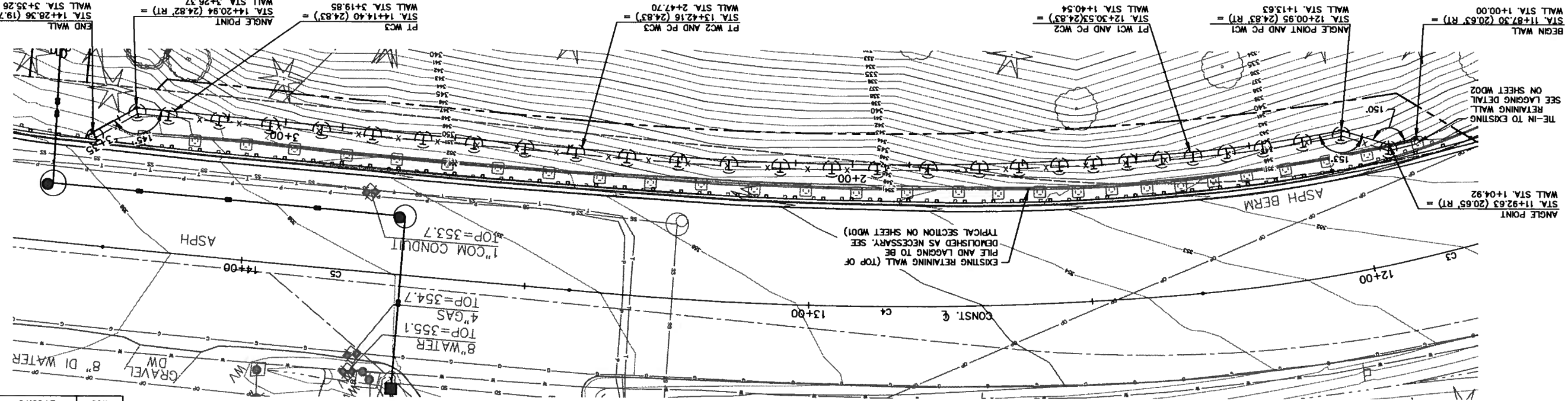
CITY OF SAMMAMISH
LOUIS THOMPSON ROAD SE SLIDE REPAIR AND DRAINAGE IMPROVEMENTS
KING COUNTY WASHINGTON

WL01
14 OF 16



- NOTES**
- FOR SOLDIER PILE AND LAGGING DETAILS SEE SHEET WDO1.
 - WALL HORIZONTAL CURVES MAY BE DEVELOPED USING LINEAR SEGMENTS WITH A LENGTH EQUAL TO THE PILE SPACING AND ANGLE POINTS LOCATED AT THE PILE CENTERLINE. WALL SHALL BE CONSTRUCTED IN ACCORDANCE WITH THE GEOTECHNICAL RECOMMENDATION IN APPENDIX C OF THE SPECIAL PROVISIONS.

PLAN



CURVE DATA

CURVE	P.I. STATION	DELTA	RADIUS	TANGENT	LENGTH
WC3	2+83.78	0° 33' 37"	7377.67	36.08'	72.16'
WC2	1+94.28	10° 40' 27"	575.17'	53.75'	107.15'
WC1	1+27.10	6° 10' 02"	250.03'	13.47'	26.91'

SEC. 32, T. 25 N, R. 6 E, W.M.

CALL 48 HOURS BEFORE YOU DIG
1-800-424-5555

NO.	DATE	BY	APPR.	REVISION

JOB#: COSA0022
 OSGN: EWBO
 DRN: EWBO
 CHKD: MCF
 DATE: 5/22/2018
 SCALE: AS NOTED

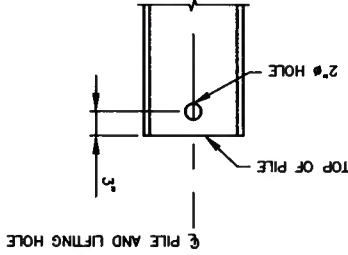
DAVID EVANS AND ASSOCIATES INC.
 14432 SE Eastgate Way, Suite 400
 Bellevue Washington 98007
 Phone: 425.519.8500



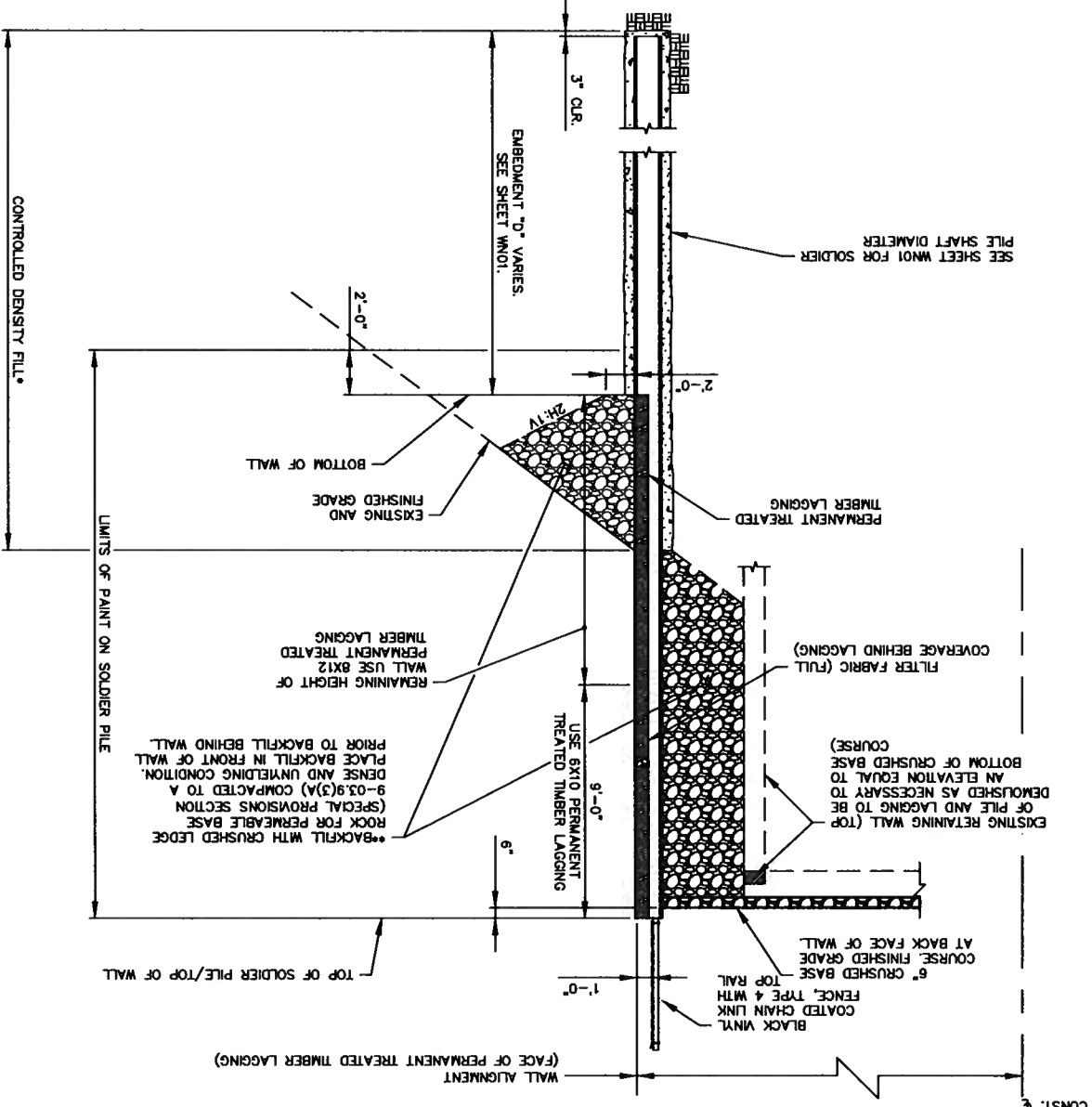
CITY OF SAMMAMISH
LOUIS THOMPSON ROAD SE SLIDE REPAIR AND DRAINAGE IMPROVEMENTS
 KING COUNTY WASHINGTON

WD01
 15 OF 16

SOLDIER PILE LIFTING HOLE

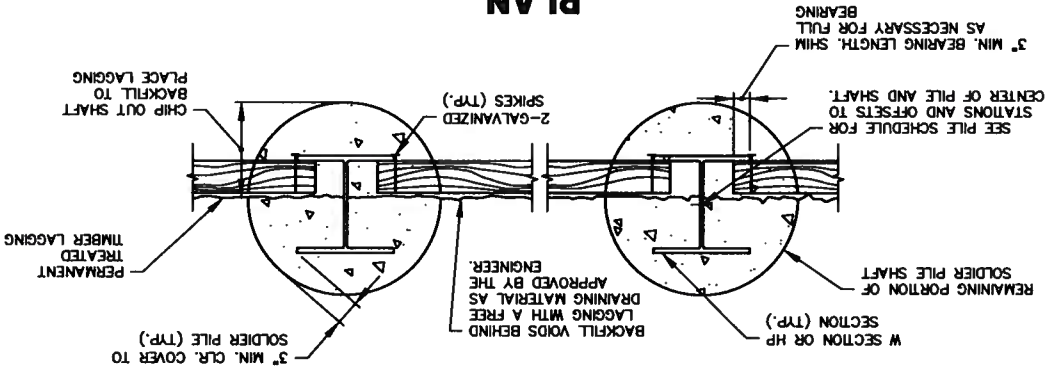


TYPICAL SECTION

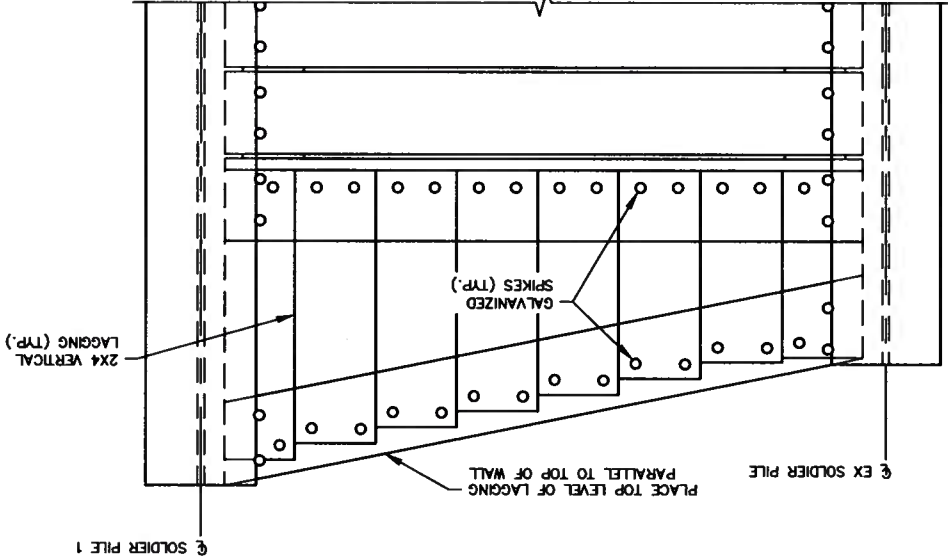


- USE CONTROL DENSITY FILL WHEN PLACED IN THE DRY, USE PUMPABLE LEAN CONCRETE WHEN PLACED IN THE WET.
- ** APPROXIMATE QUANTITY OF BACKFILL EQUALS 95 CY IN FRONT OF WALL AND 255 CY BEHIND WALL. CONTRACTOR TO VERIFY QUANTITY.

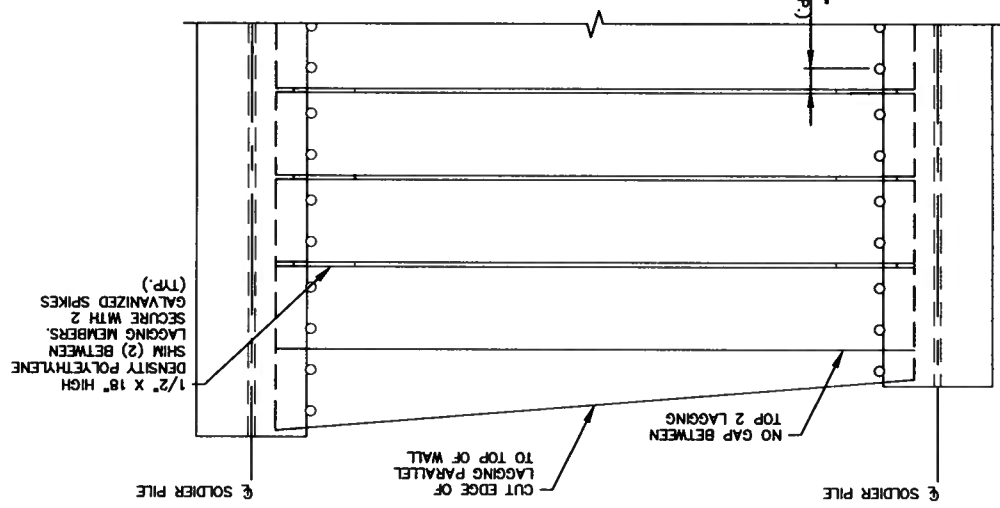
PLAN



ELEVATION AT NORTH END OF WALL



TYPICAL ELEVATION



NOTES

1. HEM-FIR TIMBER LAGGING SHALL NOT BE USED.
2. DOUGLAS FIR-LARCH, GRADE NO. 2 OR BETTER, TREATED IN ACCORDANCE WITH WSDOT STD. SPECIFICATION SECTION 9-09.3(1), SHALL BE USED.
3. NO CLIPPING OF TIMBER LAGGING CORNERS ALLOWED.
4. USE 40D GALVANIZED WIRE SPIKES FOR ALL LAGGING.
5. SPIKES SHALL NOT BE BENT.
6. ALTERNATIVE PERMANENT TREATED TIMBER LAGGING MAY BE DESIGNED BY THE CONTRACTOR AND SUBMITTED TO THE ENGINEER FOR APPROVAL IN ACCORDANCE WITH WSDOT STD. SPECIFICATION SECTION 6-13.3(6).

SHIM DETAIL

